



DETR's Research and Analysis Bureau
CHIEF ECONOMIST BILL ANDERSON

www.nevadaworkforce.com

NEVADA GOVERNOR
BRIAN SANDOVAL
DETR Director
Don Soderberg



Media Contact:
Mae Worthey, Ed.D
(702) 486.7991 o
(702) 249.6324 c

PRESS RELEASE

For Immediate Release
March 14, 2017

Nevada's Metro Areas Show Improvement Since Height of Recession

CARSON CITY, NV— In Las Vegas, the jobless rate stands at 5.1 percent for January, while Reno/Sparks unemployment is below the statewide rate of 5 percent at just 4.7 percent. Carson City's unemployment rate is 5.9 percent.

Due to annual benchmarking/updating, revised December unemployment data for the metro areas is unavailable for our normal month-to-month comparison at this time, said Bill Anderson, chief economist for Nevada's Department of Employment, Training and Rehabilitation.

"Compared to recessionary highs, Nevada's metro areas continue to show significant improvement," Anderson said. "Trends are on par with statewide rates showing over the year reductions in the unemployment rates and notable job growth."

In the metro areas, Las Vegas gained the most with 34,600 new jobs, a growth rate of 3.7 percent. In Carson City, employment increased by 500 over the year, a growth rate of 1.8 percent. Reno/Sparks experienced the fastest growth rate at 4.2 percent, corresponding to 9,000 new jobs over the year.

Visit us <http://www.nevadaworkforce.com> and Follow us on Twitter: <http://www.twitter.com/NVlabormarket>

ABOUT THE RESEARCH AND ANALYSIS BUREAU

The Research and Analysis Bureau is Nevada's premier source for labor market information. A part of DETR, the Bureau is responsible for creating, analyzing, and reporting Nevada's labor market information, in cooperation with the United States Bureau of Labor Statistics (BLS).



DETR is comprised of the Employment Security Division, Equal Rights Commission, Rehabilitation Division, and the Research and Analysis Bureau. DETR oversees the Nevada JobConnect System to provide training and job placement services to job seekers and to assist employers in hiring practices. It also supports economic development efforts through improving Nevada's workforce.

NEVADA SUB-STATE LABOR MARKET OVERVIEW

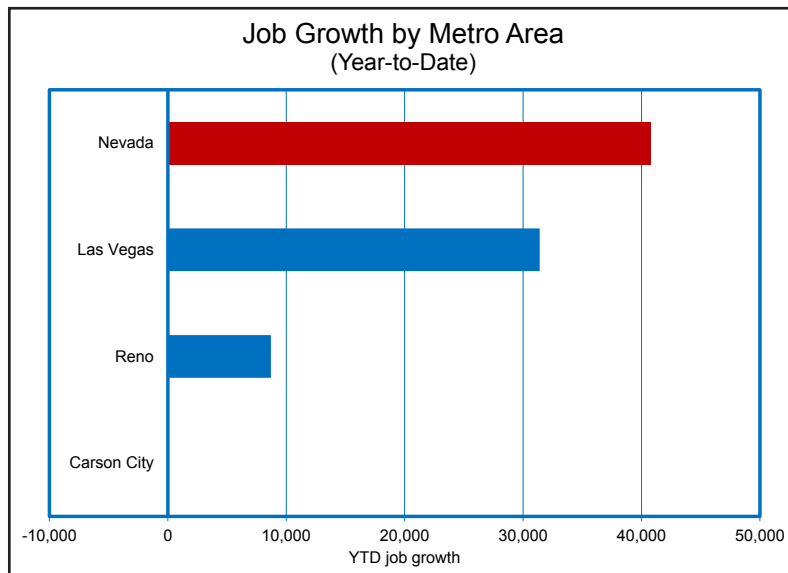
January 2017

Following all-time high employment levels Statewide, Nevada's three metro areas all experienced seasonally-adjusted employment gains this month. Employment was expected to decline in each of the metropolitan statistical areas (MSAs) in January, in part due to a reversal of holiday-related hiring. Las Vegas was expected to lose 14,500 jobs, but only realized a loss of 11,400, resulting in a seasonally adjusted gain of 3,100 jobs. In Carson City, employment was expected to decline by 900 but only actually went down by 600 jobs, resulting in a seasonally

Nevada Nonfarm Jobs: December - January Change

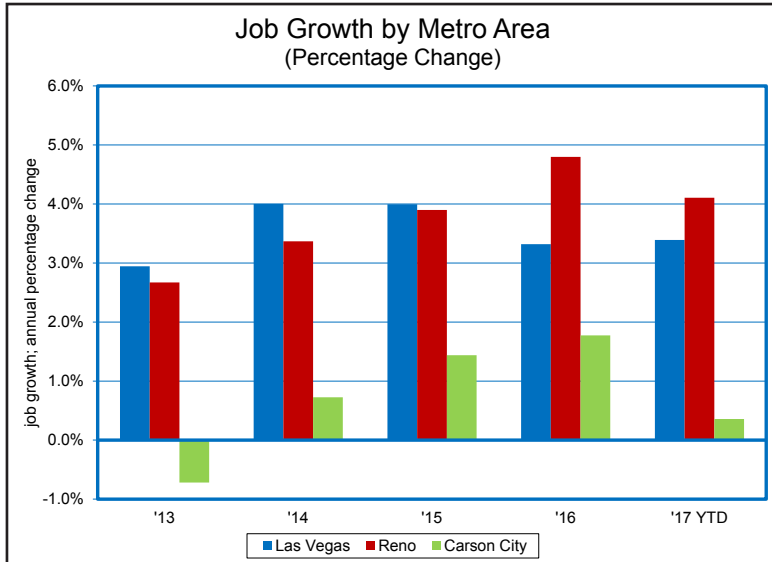
	Unadjusted Change	Expected Seasonal Movement	Seasonally Adjusted Change
Las Vegas	-11,400	-14,500	3,100
Reno	-6,800	-7,300	500
Carson City	-600	-900	300

adjusted increase of 300. Finally, in Reno/Sparks, payrolls decreased by 6,800 when 7,300 jobs were expected to be lost based upon historical trends, resulting in a seasonally-adjusted employment gain of 500.



Over-the-year job gains amounted to 44,400 new jobs Statewide, a growth rate of 3.5 percent. In the metro areas, Las Vegas gained the most with 34,600 new jobs, a growth rate of 3.7 percent. Specifically, goods-producing industries added 4,500 to payrolls while service providers increased by 26,900¹. In Carson City, employment increased by 500 over the year, a growth rate of 1.8 percent. That area saw no change to goods-producing employment, and a gain of 100 service-pro-

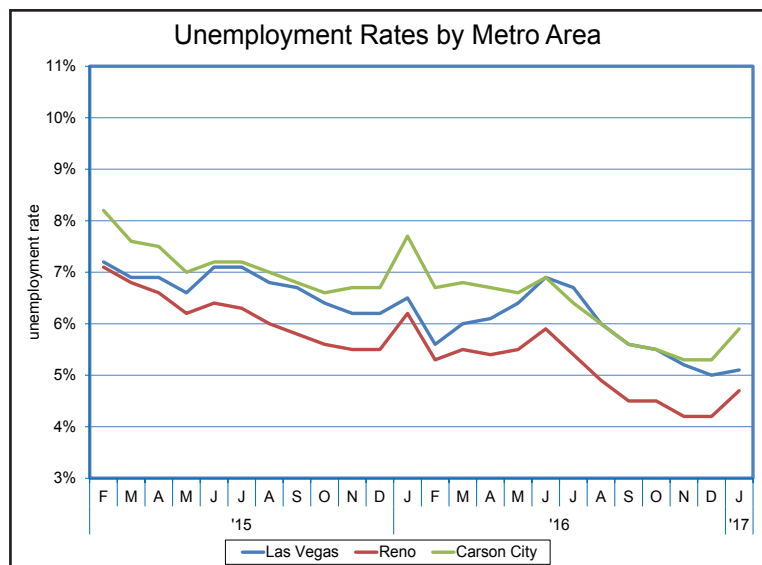
¹ References to total MSA employment are adjusted for seasonality, whereas references to goods-producing and service-providing industries are not.

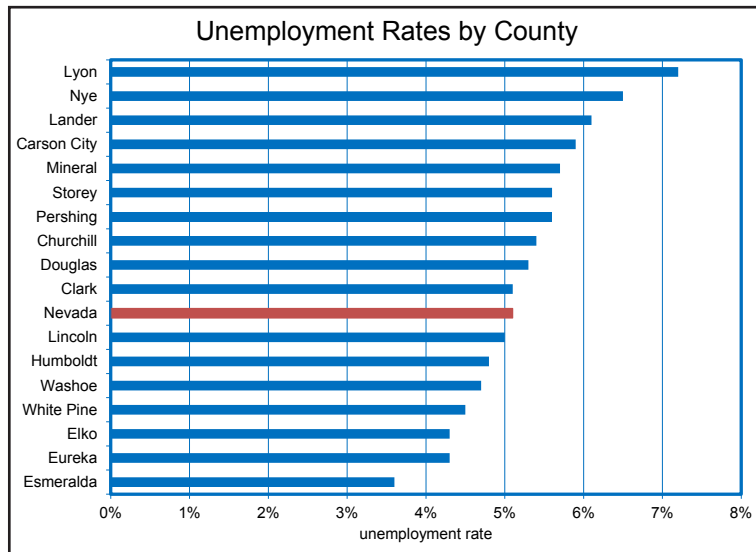


viding jobs. Reno/Sparks experienced the fastest growth rate at 4.2 percent, corresponding to 9,000 new jobs over the year. Of these, 1,600 were goods-producing and 7,100 were in service-providing industries.

This month we look at employment levels of African American workers using data from the Census Bureau's Longitudinal Employer-Household Dynamics Program. Employment of Black workers has been trending up across the State since the recession, following the general trend of employment gains for all Nevada workers. In fact, as is the case for total employment, the number of African American jobholders has surpassed the pre-recessionary peak. Of the State's metropolitan areas, Las Vegas contains the largest share of African American workers in 2016, at over 12 percent of the total workforce. Across the State as a whole, Black workers comprise ten percent of all employment. In the Reno/Sparks metro area, that figure is four percent. Statewide, there are 123,600 employed Black workers, 112,300 of which are in Las Vegas. Reno/Sparks has 8,600 Black workers.

This month we also take a closer look at employment gains in the construction industry since the recession. Statewide, construction employment reached its lowest point in 2012. We analyze construction job growth throughout Nevada over the 2012:IIIQ-2016:IIIQ recovery period. Comparing the same quarter over time minimizes the effect of seasonal employment patterns on the analysis. Across the State, construction employment has increased 44 percent over the past four years, reaching 77,600 jobs in 2016. Storey County saw the largest growth rate, at 360 percent or 490 new jobs. Douglas and Washoe both increased construction employment by at least half, translating to 470 and 4,800 new jobs, respectively. Clark gained back 17,400 jobs, a growth of 46 percent. The only counties to lose employment in construction between 2012 and 2016 were White Pine (-53 percent), Humboldt (-39 percent), Esmeralda (-23 percent), and Elko (-3 percent). It should be noted that information for some counties cannot be reported due to disclosure standards. Employment from these counties accounts for less than 400 jobs.





Statewide, the seasonally adjusted unemployment rate stands at just five percent this month. The non-seasonally adjusted rate is 5.1 percent. In the metro areas, Reno/Sparks unemployment is below the Statewide rate at just 4.7 percent². This is down 9.2 percentage points from January of 2011, following the recession. Carson City's unemployment rate in January is 5.9 percent, down nine points from 14.9 percent in the same month in 2011. In Las Vegas, the jobless rate stands at 5.1 percent, down 8.8 percentage points from January of 2011.

Unemployment in Nevada's counties ranges from 3.6 percent (Esmeralda) to 7.2 percent (Lyon) in January, with fourteen out of seventeen counties experiencing rates below six percent. Storey has gained back the most ground since the recession, with a rate of 5.6 percent in January of this year, 12.5 percentage points lower than the 2011 rate of 18.1 percent. Lyon and Nye

² The State's seasonally adjusted unemployment rate is five percent in January, down from 5.1 percent in December and down from 6.2 percent in January 2016. Unemployment rates for the State's metropolitan areas and counties reported here are not adjusted for seasonality. Hence, comparisons to the State's seasonally adjusted rate should be avoided. Legitimate comparisons, however, can be made to the State's unadjusted rate - 5.1 percent in January, up from 4.9 percent in December and down from 6.6 percent in January 2016.

have also shaved more than ten percentage points off of their unemployment rates since 2011.

The number of initial claims for unemployment insurance (UI) at the county level began 2017 down in all but two of Nevada's counties. The largest nominal declines relative to last year occurred in the State's largest counties, with Clark and Washoe experiencing respective declines of 2,730 and 310 claims. Only Storey and Churchill County saw a rise in claims relative to 2016.

Unemployment insurance claim activity in Nevada is at the lowest level recorded in years. Looking at claim activity relative to the size of the workforce provides additional insight into the underlying health of the labor market, and provides information on whether additional room remains for improvement. Statewide, we registered 2.1 claims per

	January 2017 (Year-to-Date)		Change
	2017	2016	
Clark	9,854	12,586	-2,732
Washoe	2,527	2,836	-309
Elko	169	268	-99
Carson City	376	474	-98
Lyon	374	457	-83
Nye	119	197	-78
Humboldt	68	121	-53
Lander	18	54	-36
White Pine	21	47	-26
Douglas	253	268	-15
Mineral	21	30	-9
Lincoln	5	14	-9
Pershing	20	25	-5
Esmeralda	3	8	-5
Eureka	3	6	-3
Storey	17	16	1
Churchill	131	123	8

*County level totals are not directly comparable to Statewide monthly totals due to reporting differences.

1,000 jobs in 2016. This is near an all-time low, indicating little room for improvement by historical standards. Looking at this measure at the county level shows considerable variation throughout the State. Counties with the lowest ratios, such as Eureka and Storey, average less than one initial claim per 1,000 jobs. This reflects, in part, the relatively small number of employed living in each county. At the same time, however, both counties have experienced above-average employment growth. The counties with the highest claims per 1,000 employed, Lyon and Carson City, had respective ratios of 2.6 and 2.3. Clark County, which represents more than three-fourths of Nevada's initial claims, had an average of 2.25 claims per 1,000 employed, very close to the Statewide ratio.

nally, 630 job ads were posted for Carson City, down from 700 in January of last year. Douglas saw the largest gain over the year, with an additional 70 job ads for that area.

Online job posting activity³ is down over the year in Nevada's metro areas, but up in nine of seventeen counties. In January, there were 10,100 online job ads for positions in Clark County, down from 13,900 last year. There were 2,900 ads for jobs in Washoe, down from 3,300 last year. Fi-

Online Job Posting Activity by County			
	January Online Job Postings (Year-to-Date)		Change
	2017	2016	
Clark	10,083	13,859	-3,776
Washoe	2,909	3,330	-421
Carson City	630	702	-72
Elko	434	473	-39
Lyon	183	222	-39
Humboldt	117	150	-33
Lander	31	45	-14
Lincoln	33	33	0
Mineral	54	51	3
Storey	11	8	3
Eureka	16	9	7
Esmeralda	16	7	9
Nye	163	154	9
Pershing	37	19	18
White Pine	126	100	26
Churchill	212	180	32
Douglas	361	291	70

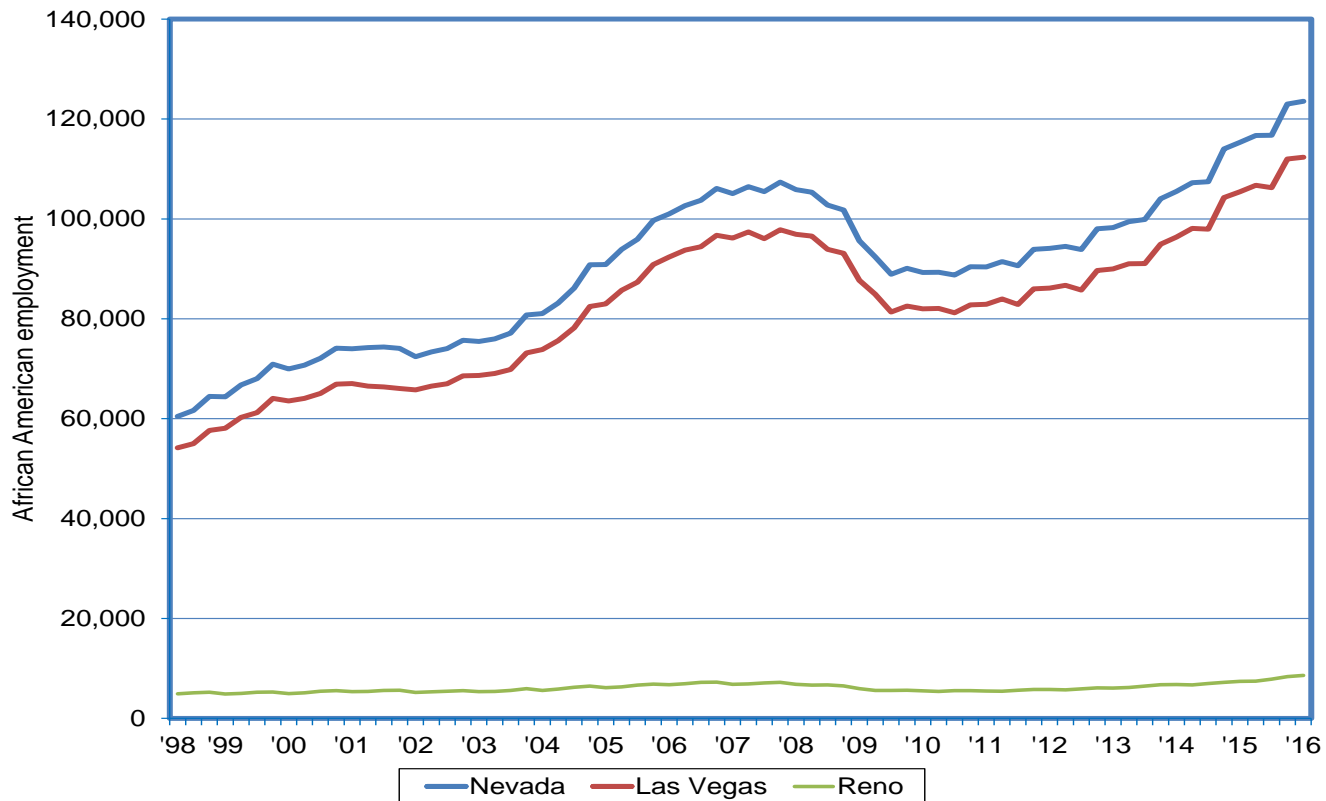
³ Online job postings are obtained through DETR's Silver State Solutions initiative. Online job posting volume does not necessarily correlate with the level of job openings or hiring. Internal company hiring and union hiring are often not captured by online ads. High ad volume often occurs for occupations/industries that are having difficulty finding qualified candidates, high turnover positions/recurring openings, or when companies are building large candidate pools. Online job postings should only be used with caution when developing/analyzing time series trends due to the constant changes in the rate of online advertising usage and in the methods used for collecting the data.

Nevada Sub-State Labor Market Briefing: January 2017

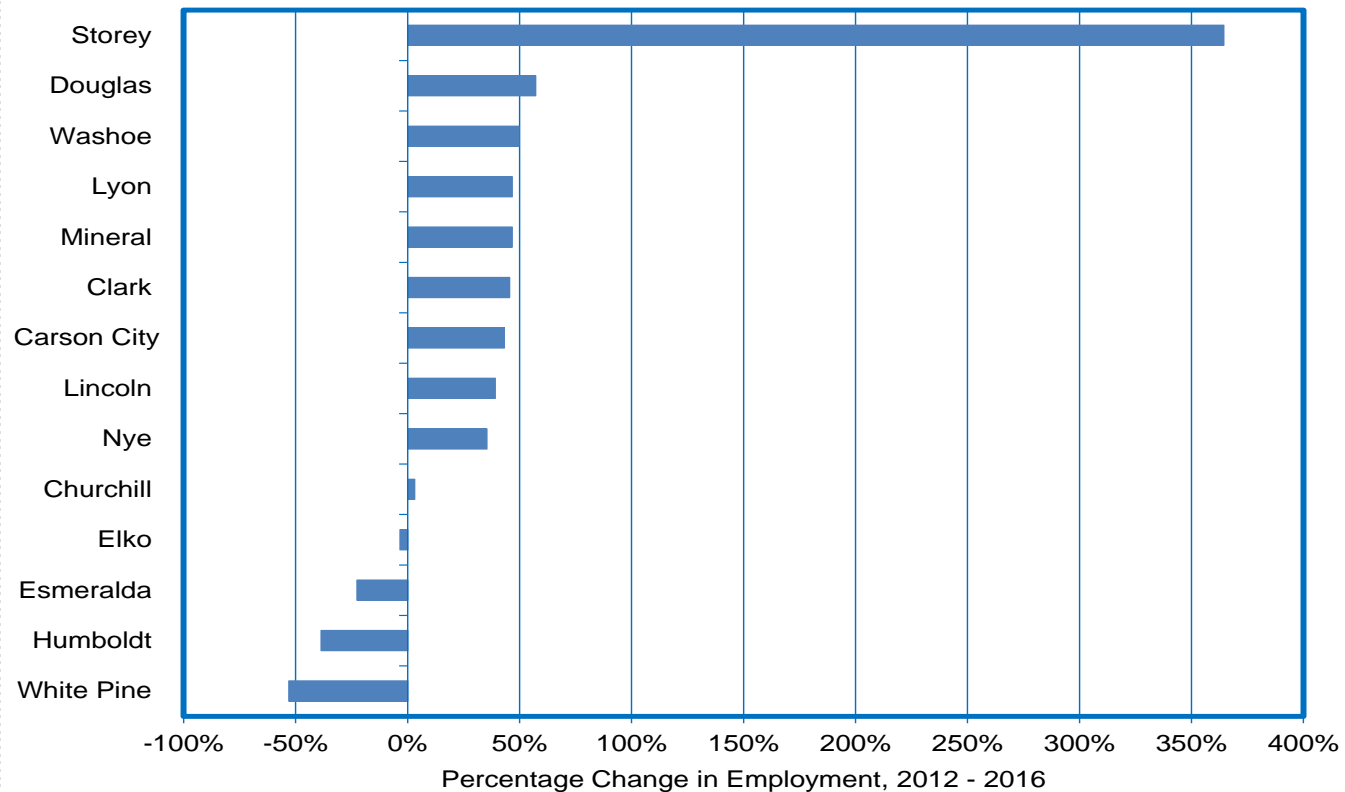
Special Topics Slides



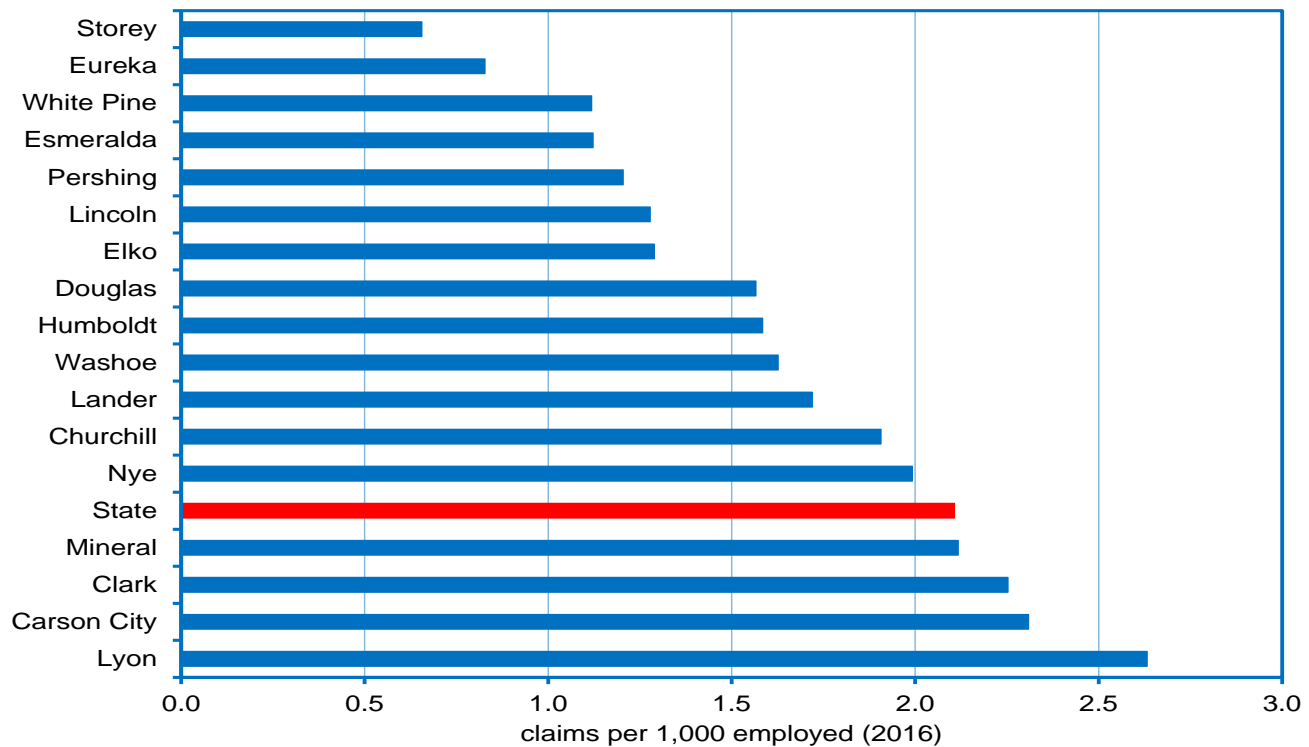
African American Employment Trending Up Across Nevada



Nevada Construction Employment Has Grown by 44% Since 2012; Storey County Adds 490 Jobs



Storey and Eureka County Each Have Less Than One UI Claim per 1,000 Jobs; Statewide Average = 2.1





NEVADA Employment & Unemployment

January 2017

Employment Growth:

(Employment in thousands)

	M/M	Y/Y	Y/Y%
Nevada	1.0	44.4	3.5%
Nevada (Not Seasonally Adjusted)	-20.9	40.8	3.2%
Las Vegas MSA	3.1	34.6	3.7%
Reno\Sparks MSA	0.5	9.0	4.2%
Carson City MSA	0.3	0.5	1.8%

Unemployment Rates:

Nevada (Seasonally Adjusted)	5.0%
Nevada	5.1%
Las Vegas MSA	5.1%
Reno\Sparks MSA	4.7%
Carson City MSA	5.9%

Employment estimates are produced by the Current Employment Statistics program.

Labor Force estimates are produced by the Local Area Unemployment Statistics program.

Research and Analysis Bureau, Nevada Department of Employment, Training and Rehabilitation
operates these programs in cooperation with the U.S. Department of Labor, Bureau of Labor Statistics.

Telephone (775) 684-0450

Nevada Labor Force and Unemployment

(Estimates In Thousands)

(Estimates In Thousands)	LABOR FORCE SUMMARY	Jan-17	Jan-16	CHANGE	% CHANGE	Dec-16
NEVADA STATEWIDE Seasonally Adjusted						
	LABOR FORCE	1435.8	1421.1	14.7	1.0%	1434.4
	EMPLOYMENT	1364.6	1333.1	31.5	2.4%	1360.7
	UNEMPLOYMENT	71.2	88.0	-16.8	-19.1%	73.7
	UNEMPLOYMENT RATE	5.0%	6.2%	-----	-----	5.1%
NEVADA STATEWIDE						
	LABOR FORCE	1428.6	1415.9	12.8	0.9%	1429.0
	EMPLOYMENT	1356.0	1322.7	33.3	2.5%	1358.8
	UNEMPLOYMENT	72.6	93.2	-20.6	-22.1%	70.2
	UNEMPLOYMENT RATE	5.1%	6.6%	-----	-----	4.9%
Las Vegas-Paradise MSA Includes Clark County						
	LABOR FORCE	1053.1	1049.0	4.1	0.4%	1048.3
	EMPLOYMENT	999.5	980.9	18.6	1.9%	995.4
	UNEMPLOYMENT	53.6	68.1	-14.5	-21.2%	52.9
	UNEMPLOYMENT RATE	5.1%	6.5%	-----	-----	5.0%
Reno-Sparks MSA Includes Washoe and Storey Counties						
	LABOR FORCE	231.9	229.6	2.3	1.0%	234.5
	EMPLOYMENT	220.9	215.3	5.6	2.6%	224.7
	UNEMPLOYMENT	11.0	14.3	-3.3	-22.9%	9.7
	UNEMPLOYMENT RATE	4.7%	6.2%	-----	-----	4.2%
Carson City MSA						
	LABOR FORCE	24.5	24.6	-0.1	-0.4%	24.4
	EMPLOYMENT	23.0	22.7	0.3	1.5%	23.1
	UNEMPLOYMENT	1.5	1.9	-0.4	-23.2%	1.3
	UNEMPLOYMENT RATE	5.9%	7.7%	-----	-----	5.3%

UNEMPLOYMENT RATES BASED ON UNROUNDED DATA

Employment adjusted by census relationships to reflect number of persons by place of residence.

Information compiled by DETR's Research & Analysis Bureau

Establishment Based Industrial Employment Nevada- Seasonally Adjusted

(Estimates In Thousands)

	Jan-17	Jan-16	CHANGE	% CHANGE	Dec-16
<u>Total All Industries</u>	1322.3	1277.9	44.4	3.5%	1321.3

Nevada- Non-Seasonally Adjusted

	Jan-17	Jan-16	CHANGE	% CHANGE	Dec-16
<u>Total All Industries</u>	1305.0	1264.2	40.8	3.2%	1325.9

Las Vegas-Paradise MSA *

	Jan-17	Jan-16	CHANGE	% CHANGE	Dec-16
<u>Total All Industries</u>	967.5	932.9	34.6	3.7%	964.4

Reno/Sparks MSA *

	Jan-17	Jan-16	CHANGE	% CHANGE	Dec-16
<u>Total All Industries</u>	225.4	216.4	9.0	4.2%	224.9

Carson City MSA *

	Jan-17	Jan-16	CHANGE	% CHANGE	Dec-16
<u>Total All Industries</u>	28.9	28.4	0.5	1.8%	28.6

* Seasonally Adjusted

Las Vegas-Paradise MSA

Includes Clark County
(Estimates In Thousands)

ESTABLISHMENT BASED INDUSTRIAL EMPLOYMENT	Jan-17	Jan-16	CHANGE	% CHANGE	Dec-16
Total All Industries	957.5	926.1	31.4	3.4%	968.9
Goods Producing	80.1	75.6	4.5	6.0%	81.7
Natural Resources & Mining	0.3	0.3	0.0	0.0%	0.3
Construction	57.6	53.6	4.0	7.5%	59.1
Construction of Buildings	8.6	8.1	0.5	6.2%	8.9
Specialty Trade Contractors	43.3	40.1	3.2	8.0%	44.6
Building Foundation & Exterior Contractors	10.2	8.9	1.3	14.6%	10.7
Building Finishing Contractors	11.9	10.6	1.3	12.3%	12.1
Manufacturing	22.2	21.7	0.5	2.3%	22.3
Durable Goods	12.6	12.5	0.1	0.8%	12.7
Other Miscellaneous Manufacturing	4.1	4.1	0.0	0.0%	4.1
Non-durable Goods	9.6	9.2	0.4	4.3%	9.6
Service Providing	877.4	850.5	26.9	3.2%	887.2
Private Service Providing	777.6	751.4	26.2	3.5%	784.6
Trade, Transportation & Utilities	170.6	167.1	3.5	2.1%	174.7
Wholesale	21.7	21.2	0.5	2.4%	21.9
Retail	107.1	105.4	1.7	1.6%	109.7
Food & Beverage Stores	17.4	16.6	0.8	4.8%	17.6
Health and Personal Care Stores	7.7	7.3	0.4	5.5%	7.9
Trans, Warehousing & Utilities	41.8	40.5	1.3	3.2%	43.1
Utilities	2.6	2.6	0.0	0.0%	2.6
Transportation & Warehousing	39.2	37.9	1.3	3.4%	40.5
Air	6.4	6.2	0.2	3.2%	6.3
Transit and Ground Passenger	13.6	13.4	0.2	1.5%	13.4
Taxi and Limousine Service	9.9	9.9	0.0	0.0%	9.7
Information	11.0	11.0	0.0	0.0%	11.1
Telecommunications	2.9	2.8	0.1	3.6%	2.9
Financial Activities	49.1	47.3	1.8	3.8%	49.0
Finance and Insurance	27.1	26.3	0.8	3.0%	27.0
Credit Intermediation & Related	15.4	14.5	0.9	6.2%	15.3
Real Estate and Rental and Leasing	22.0	21.0	1.0	4.8%	22.0
Professional & Business Services	136.6	130.8	5.8	4.4%	136.4
Professional, Scientific and Technical	40.2	38.4	1.8	4.7%	40.7
Management of Companies	19.5	19.1	0.4	2.1%	19.9
Administrative & Support and Waste Mgt.	76.9	73.3	3.6	4.9%	75.8
Administrative and Support Services	74.4	70.8	3.6	5.1%	73.3
Employment Services	14.0	13.1	0.9	6.9%	14.2
Other Support Services	11.9	12.2	-0.3	-2.5%	9.9
Education and Health Services	92.9	88.6	4.3	4.9%	95.0
Health Care and Social Assistance	83.2	79.1	4.1	5.2%	85.0
Ambulatory Health Care Services	38.1	36.0	2.1	5.8%	38.9
Hospitals	20.5	19.4	1.1	5.7%	20.6
Leisure and Hospitality	286.4	278.4	8.0	2.9%	286.5
Arts, Entertainment and Recreation	20.6	18.6	2.0	10.8%	20.8
Accommodation and Food Service	265.8	259.8	6.0	2.3%	265.7
Accommodation	165.9	165.5	0.4	0.2%	166.6
Casino Hotels and Gaming	157.6	157.6	0.0	0.0%	158.0
Casino Hotels	152.7	152.7	0.0	0.0%	153.1
Gaming Industries	4.9	4.9	0.0	0.0%	4.9
Food Services and Drinking Places	99.9	94.3	5.6	5.9%	99.1
Full-Service Restaurants	49.6	47.8	1.8	3.8%	49.8
Limited-Service Restaurants	37.0	35.4	1.6	4.5%	37.1
Other Services	31.0	28.2	2.8	9.9%	31.9
Government	99.8	99.1	0.7	0.7%	102.6
Federal	12.8	12.6	0.2	1.6%	13.1
State	18.7	18.2	0.5	2.7%	20.3
Local	68.3	68.3	0.0	0.0%	69.2

Non-Seasonally Adjusted Data.

Reno-Sparks MSA

Includes Washoe and Storey Counties

(Estimates In Thousands)

ESTABLISHMENT BASED INDUSTRIAL EMPLOYMENT	Jan-17	Jan-16	CHANGE	% CHANGE	Dec-16
Total All Industries	220.6	211.9	8.7	4.1%	227.4
<i>Goods Producing</i>	28.5	26.9	1.6	5.9%	28.9
Natural Resources & Mining	0.2	0.2	0.0	0.0%	0.2
Construction	13.8	13.1	0.7	5.3%	14.4
Manufacturing	14.5	13.6	0.9	6.6%	14.3
Miscellaneous Manufacturing	2.4	2.2	0.2	9.1%	2.3
<i>Service Providing</i>	192.1	185.0	7.1	3.8%	198.5
<i>Private Service Providing</i>	162.6	156.3	6.3	4.0%	167.5
Trade, Transportation & Utilities	51.2	49.1	2.1	4.3%	53.1
Wholesale	9.2	9.0	0.2	2.2%	9.3
Retail	23.5	22.8	0.7	3.1%	24.4
Food & Beverage Stores	3.2	3.3	-0.1	-3.0%	3.3
Trans, Warehousing & Utilities	18.5	17.3	1.2	6.9%	19.4
Information	2.2	2.1	0.1	4.8%	2.2
Financial Activities	10.4	10.1	0.3	3.0%	10.5
Finance and Insurance	6.3	6.2	0.1	1.6%	6.3
Professional & Business Services	30.2	29.5	0.7	2.4%	32.2
Administrative & Support and Waste Mgt.	16.6	16.1	0.5	3.1%	18.4
Education and Health Services	25.8	24.7	1.1	4.5%	26.0
Leisure and Hospitality	36.9	34.9	2.0	5.7%	37.4
Accommodation and Food Service	31.4	29.7	1.7	5.7%	32.0
Accommodation	15.6	15.0	0.6	4.0%	15.8
Casino Hotels	14.2	13.9	0.3	2.2%	14.4
Food Services and Drinking Places	15.8	14.7	1.1	7.5%	16.2
Other Services	5.9	5.9	0.0	0.0%	6.1
Government	29.5	28.7	0.8	2.8%	31.0
Federal	3.7	3.6	0.1	2.8%	3.7
State	9.8	9.7	0.1	1.0%	11.0
Local	16.0	15.4	0.6	3.9%	16.3

Non-Seasonally Adjusted Data.

Data may not add due to rounding. Employment by place of work. Does not coincide with labor force concept. Includes multiple job holders.

Carson City MSA

Includes Carson City
(Estimates In Thousands)

ESTABLISHMENT BASED INDUSTRIAL EMPLOYMENT	Jan-17	Jan-16	CHANGE	% CHANGE	Dec-16
Total All Industries	28.1	28.0	0.1	0.4%	28.7
<i>Goods Producing</i>	3.6	3.6	0.0	0.0%	3.6
Manufacturing	2.5	2.6	-0.1	-3.8%	2.5
<i>Service Providing</i>	24.5	24.4	0.1	0.4%	25.1
<i>Private Service Providing</i>	15.4	15.1	0.3	2.0%	15.7
Trade, Transportation & Utilities	4.0	3.8	0.2	5.3%	4.1
Retail	3.2	3.0	0.2	6.7%	3.3
Professional & Business Services	1.8	1.8	0.0	0.0%	1.9
Leisure and Hospitality	3.4	3.3	0.1	3.0%	3.5
Government	9.1	9.3	-0.2	-2.2%	9.4
Federal	0.5	0.5	0.0	0.0%	0.5
State	6.7	6.8	-0.1	-1.5%	6.9
Local	1.9	2.0	-0.1	-5.0%	2.0

Non-Seasonally Adjusted Data.

Data may not add due to rounding. Employment by place of work. Does not coincide with labor force concept. Includes multiple job holders.



2016 Industrial Employment- Seasonally Adjusted

(Estimates In Thousands)

(Estimates In Thousands)

Nevada Statewide													
Estimates in thousands	JAN	FEB	MAR	APR	MAY	JUN	JUL	AUG	SEP	OCT	NOV	DEC	AVERAGE
Total All Industries	1322.3												1322.3
Nevada Statewide (NSA)													
Estimates in thousands	JAN	FEB	MAR	APR	MAY	JUN	JUL	AUG	SEP	OCT	NOV	DEC	AVERAGE
Total All Industries	1305.0												1305.0
Las Vegas MSA													
Estimates in thousands	JAN	FEB	MAR	APR	MAY	JUN	JUL	AUG	SEP	OCT	NOV	DEC	AVERAGE
Total All Industries	967.5												967.5
Reno/Sparks MSA													
Estimates in thousands	AVERAGE												
Total All Industries	225.4												225.4
Carson City MSA													
Estimates in thousands	AVERAGE												
Total All Industries	28.9												28.9

(NSA)-Non-Seasonally Adjusted Data.

Data may not add due to rounding. Employment by place of work. Does not coincide with labor force concept. Includes multiple job holders.



Las Vegas-Paradise MSA

2016 Industrial Employment

Estimates in thousands	JAN	FEB	MAR	APR	MAY	JUN	JUL	AUG	SEP	OCT	NOV	DEC	AVERAGE
Total All Industries	957.5												957.5
Goods Producing	80.1												80.1
Natural Resources & Mining	0.3												0.3
Construction	57.6												57.6
Construction of Buildings	8.6												8.6
Specialty Trade Contractors	43.3												43.3
Building Foundation & Exterior Contrac	10.2												10.2
Building Finishing Contractors	11.9												11.9
Manufacturing	22.2												22.2
Durable Goods	12.6												12.6
Other Miscellaneous Manufacturing	4.1												4.1
Non-durable Goods	9.6												9.6
Service Providing	877.4												877.4
Private Service Providing	777.6												777.6
Trade, Transportation & Utilities	170.6												170.6
Wholesale	21.7												21.7
Retail	107.1												107.1
Food & Beverage Stores	17.4												17.4
Health and Personal Care Stores	7.7												7.7
Trans, Warehousing & Utilities	41.8												41.8
Utilities	2.6												2.6
Transportation & Warehousing	39.2												39.2
Air	6.4												6.4
Transit and Ground Passenger	13.6												13.6
Taxi and Limousine Service	9.9												9.9
Information	11.0												11.0
Telecommunications	2.9												2.9
Financial Activities	49.1												49.1
Finance and Insurance	27.1												27.1
Credit Intermediation & Related	15.4												15.4
Real Estate and Rental and Leasing	22.0												22.0
Professional & Business Services	136.6												136.6
Professional, Scientific and Technical	40.2												40.2
Management of Companies	19.5												19.5
Administrative & Support and Waste Mgt.	76.9												76.9
Administrative and Support Services	74.4												74.4
Employment Services	14.0												14.0
Other Support Services	11.9												11.9
Education and Health Services	92.9												92.9
Health Care and Social Assistance	83.2												83.2
Ambulatory Health Care Services	38.1												38.1
Hospitals	20.5												20.5
Leisure and Hospitality	286.4												286.4
Arts, Entertainment and Recreation	20.6												20.6
Accommodation and Food Service	265.8												265.8
Accommodation	165.9												165.9
Casino Hotels and Gaming	157.6												157.6
Casino Hotels	152.7												152.7
Gaming Industries	4.9												4.9
Food Services and Drinking Places	99.9												99.9
Full-Service Restaurants	49.6												49.6
Limited-Service Restaurants	37.0												37.0
Other Services	31.0												31.0
Government	99.8												99.8
Federal	12.8												12.8
State	18.7												18.7
Local	68.3												68.3

Non-Seasonally Adjusted Data.

Mar-17



Reno-Sparks MSA

2016 Industrial Employment

Estimates in thousands	JAN	FEB	MAR	APR	MAY	JUN	JUL	AUG	SEP	OCT	NOV	DEC	AVERAGE
Total All Industries	220.6												220.6
Goods Producing	28.5												28.5
Natural Resources & Mining	0.2												0.2
Construction	13.8												13.8
Manufacturing	14.5												14.5
Miscellaneous Manufacturing	2.4												2.4
Service Providing	192.1												192.1
Private Service Providing	162.6												162.6
Trade, Transportation & Utilities	51.2												51.2
Wholesale	9.2												9.2
Retail	23.5												23.5
Food & Beverage Stores	3.2												3.2
Trans, Warehousing & Utilities	18.5												18.5
Information	2.2												2.2
Financial Activities	10.4												10.4
Finance and Insurance	6.3												6.3
Professional & Business Services	30.2												30.2
Administrative & Support and Waste Mgt.	16.6												16.6
Education and Health Services	25.8												25.8
Leisure and Hospitality	36.9												36.9
Accommodation and Food Service	31.4												31.4
Accommodation	15.6												15.6
Casino Hotels	14.2												14.2
Food Services and Drinking Places	15.8												15.8
Other Services	5.9												5.9
Government	29.5												29.5
Federal	3.7												3.7
State	9.8												9.8
Local	16.0												16.0

Non-Seasonally Adjusted Data.

Mar-17



Carson City MSA

2016 Industrial Employment

Estimates in thousands	JAN	FEB	MAR	APR	MAY	JUN	JUL	AUG	SEP	OCT	NOV	DEC	AVERAGE
Total All Industries	28.1												28.1
<i>Goods Producing</i>	<i>3.6</i>												<i>3.6</i>
Manufacturing	2.5												2.5
<i>Service Providing</i>	<i>24.5</i>												<i>24.5</i>
<i>Private Service Providing</i>	<i>15.4</i>												<i>15.4</i>
Trade, Transportation & Utilities	4.0												4.0
Retail	3.2												3.2
Professional & Business Services	1.8												1.8
Leisure and Hospitality	3.4												3.4
Government	9.1												9.1
Federal	0.5												0.5
State	6.7												6.7
Local	1.9												1.9

Non-Seasonally Adjusted Data.

Mar-17

Data may not add due to rounding. Employment by place of work. Does not coincide with labor force concept. Includes multiple job holders.



2016 NEVADA LABOR FORCE SUMMARY DATA

(Estimates In Thousands)

	JAN	FEB	MAR	APR	MAY	JUN	JUL	AUG	SEP	OCT	NOV	DEC	AVG
NEVADA- SA													
LABOR FORCE		1435.8											1435.8
EMPLOYMENT 1/		1364.6											1364.6
UNEMPLOYMENT		71.2											71.2
UNEMPLOYMENT RATE		5.0%											5.0%
NEVADA- NSA													
LABOR FORCE		1428.6											1428.6
EMPLOYMENT 1/		1356.0											1356.0
UNEMPLOYMENT		72.6											72.6
UNEMPLOYMENT RATE		5.1%											5.1%
LAS VEGAS MSA 2/													
LABOR FORCE		1053.1											1053.1
EMPLOYMENT 1/		999.5											999.5
UNEMPLOYMENT		53.6											53.6
UNEMPLOYMENT RATE		5.1%											5.1%
RENO MSA 3/													
LABOR FORCE		231.9											231.9
EMPLOYMENT 1/		220.9											220.9
UNEMPLOYMENT		11.0											11.0
UNEMPLOYMENT RATE		4.7%											4.7%
CARSON CITY MSA 4/													
LABOR FORCE		24.5											24.5
EMPLOYMENT 1/		23.0											23.0
UNEMPLOYMENT		1.5											1.5
UNEMPLOYMENT RATE		5.9%											6.1%
ELKO MICROPOLITAN AREA 5/													
LABOR FORCE		27.8											27.8
EMPLOYMENT 1/		26.6											26.6
UNEMPLOYMENT		1.2											1.2
UNEMPLOYMENT RATE		4.3%											4.3%

Note: Unemployment rates are based on unrounded data.

1/ Adjusted by census relationships to reflect number of persons by place of residence.

2/ Clark County

3/ Washoe and Storey Counties

4/ Carson City

5/ Elko and Eureka Counties



2016 NEVADA LABOR FORCE SUMMARY DATA

	JAN	FEB	MAR	APR	MAY	JUN	JUL	AUG	SEP	OCT	NOV	DEC	AVG
CARSON CITY COUNTY													
LABOR FORCE		24,485											24,485
EMPLOYMENT		23,029											23,029
UNEMPLOYMENT		1,456											1,456
UNEMPLOYMENT RATE		5.9%											5.9%
CHURCHILL COUNTY													
LABOR FORCE		10,069											10,069
EMPLOYMENT		9,521											9,521
UNEMPLOYMENT		548											548
UNEMPLOYMENT RATE		5.4%											5.4%
CLARK COUNTY													
LABOR FORCE		1,053,144											1,053,144
EMPLOYMENT		999,507											999,507
UNEMPLOYMENT		53,637											53,637
UNEMPLOYMENT RATE		5.1%											5.1%
DOUGLAS COUNTY													
LABOR FORCE		22,595											22,595
EMPLOYMENT		21,408											21,408
UNEMPLOYMENT		1,187											1,187
UNEMPLOYMENT RATE		5.3%											5.3%
ELKO COUNTY													
LABOR FORCE		26,866											26,866
EMPLOYMENT		25,718											25,718
UNEMPLOYMENT		1,148											1,148
UNEMPLOYMENT RATE		4.3%											4.3%

Note: Unemployment rates are based on unrounded data.
Employment adjusted by census relationships to reflect number of persons by place of residence.



2016 NEVADA LABOR FORCE SUMMARY DATA

	JAN	FEB	MAR	APR	MAY	JUN	JUL	AUG	SEP	OCT	NOV	DEC	AVG
ESMERALDA COUNTY													
LABOR FORCE													474
EMPLOYMENT													457
UNEMPLOYMENT													17
UNEMPLOYMENT RATE													3.6%
EUREKA COUNTY													
LABOR FORCE													927
EMPLOYMENT													887
UNEMPLOYMENT													40
UNEMPLOYMENT RATE													4.3%
HUMBOLDT COUNTY													
LABOR FORCE													7,801
EMPLOYMENT													7,428
UNEMPLOYMENT													373
UNEMPLOYMENT RATE													4.8%
LANDER COUNTY													
LABOR FORCE													3,086
EMPLOYMENT													2,899
UNEMPLOYMENT													187
UNEMPLOYMENT RATE													6.1%
LINCOLN COUNTY													
LABOR FORCE													1,910
EMPLOYMENT													1,814
UNEMPLOYMENT													96
UNEMPLOYMENT RATE													5.0%

Note: Unemployment rates are based on unrounded data.
Employment adjusted by census relationships to reflect number of persons by place of residence.



2016 NEVADA LABOR FORCE SUMMARY DATA

	JAN	FEB	MAR	APR	MAY	JUN	JUL	AUG	SEP	OCT	NOV	DEC	AVG
LYON COUNTY													
LABOR FORCE													20,938
EMPLOYMENT													19,429
UNEMPLOYMENT													1,509
UNEMPLOYMENT RATE													7.2%
MINERAL COUNTY													
LABOR FORCE													1,981
EMPLOYMENT													1,868
UNEMPLOYMENT													113
UNEMPLOYMENT RATE													5.7%
NYE COUNTY													
LABOR FORCE													15,631
EMPLOYMENT													14,615
UNEMPLOYMENT													1,016
UNEMPLOYMENT RATE													6.5%
PERSHING COUNTY													
LABOR FORCE													2,315
EMPLOYMENT													2,186
UNEMPLOYMENT													129
UNEMPLOYMENT RATE													5.6%
STOREY COUNTY													
LABOR FORCE													1,900
EMPLOYMENT													1,793
UNEMPLOYMENT													107
UNEMPLOYMENT RATE													5.6%

Note: Unemployment rates are based on unrounded data.
Employment adjusted by census relationships to reflect number of persons by place of residence.



2016 NEVADA LABOR FORCE SUMMARY DATA

	JAN	FEB	MAR	APR	MAY	JUN	JUL	AUG	SEP	OCT	NOV	DEC	AVG
WASHOE COUNTY													
LABOR FORCE													230,017
EMPLOYMENT													219,135
UNEMPLOYMENT													10,882
UNEMPLOYMENT RATE													4.7%
WHITE PINE COUNTY													
LABOR FORCE													4,546
EMPLOYMENT													4,343
UNEMPLOYMENT													203
UNEMPLOYMENT RATE													4.5%

Note: Unemployment rates are based on unrounded data.
Employment adjusted by census relationships to reflect number of persons by place of residence.