

GWDB Sector Council Membership Roster

AEROSPACE and DEFENSE		
Required Categories	Name of Council Member	Company Name
1.Employer	Russell Carlson, President	Valley Tech Systems
2.Employer	Connie Moore, VP/HR	Arcata Associates
3.Employer	Cristi Cristich, Owner	Cristek
4.Employer	James “Heidi” Fleitz, Co-Founder	Avisight
5.Employer	Tracy Kalbfleisch, Vice President and General Manager	Dassalt Falcon Jet
6.University	Lila Glaser, Ph.D. Economist/Attorney	UNR
7.Organized Labor	TBD	Northern Nevada Sheet Metal Workers Union Local 26

HEALTH CARE and MEDICAL SERVICES		
Required Categories	Name of Council Member	Company Name
1.Employer	Joan Hall, RN, President	NV Rural Hospital Partners
2.Employer	Mary Ann Brown, Director	Hospice & Palliative Care/Renown South Meadows
3.Employer	Margaret Covelli, Chief Nursing Officer/NANE	Spring Valley Hospital
4.Employer	Linda Gerstenberger, VP of Human Resources	St. Rose Dominican Hospitals/Dignity Health
5.Employer	Kate Zhong, MD, Senior Director, Clinical Research Development	Cleveland Clinic Lou Ruvo Center for Brain Health
6.University	Marcia Turner, Ph.D. Vice Chancellor of Health Sciences	NSHE
7.Organized Labor	TBD	SEIU/Southern Nevada

INFORMATION TECHNOLOGY		
Required Categories	Name of Council Member	Company Name
1.Employer	Michael Frechette, Co-Founder	Avisight
2.Employer	Missy Young, Exec VP of Colocation	Switch
3.Employer	Christina Whatley, Deputy Director, 99 th Comm Squad	Nellis Air Force Base
4.Employer	Chrissy Menicucci, Corporate Responsibility Mgr	IGT
5.Employer	Kevin Spiars, Director Strategy and Innovation	Koch Industries
6.University	Zach Miles, Exec Director of Technology Transfer	UNLV
7.Organized labor	TBD	IBEW Local 357/Southern Nevada

MANUFACTURING and LOGISTICS		
Required Categories	Name of Council Member	Company Name
1.Employer	Gary Blosl, Plant Manager	Clearwater
2.Employer	Andrew Stevenson, Special Projects Associate	Tesla
3.Employer	Ryan Costella, Director of Strategic Initiatives	Click Bond
4.Employer	Jeff Gordon, Plant Manger	GE
5.Employer	Johnnie Stoker, CEO	K2 Energy
6.College	Jim New, Associate Dean	TMCC
7.Organized Labor	William Stanley, Secretary Treasurer	Southern Nevada Building and Construction Trades Council, AFL-CIO

MINING and MATERIALS		
Required Categories	Name of Council Member	Company Name
1.Employer	Dana Pray, Recruiting Manager	Barrick
2.Employer	Cindy Adams (Wild), Talent Acquisition Manager	Newmont
3.Employer	Sharon Horn, Director of Customer Service	RAM Enterprise
4.Employer	TBD	Cashman Equipment
5.Employer	Stefanie Stewart, HR Generalist	Boart Longyer
6. College	Brett Murphy, Dean, Academic Support/Applied Science	GBC
7.Organized Union	TBD	Operating Engineers Local 3/Northern Nevada

NATURAL RESOURCES		
Required Categories	Name of Council Member	Company Name
1.Employer	Eric Dominguez, Corp Director, Energy & Environmental Services	Caesars Palace
2.Employer	Starla Lacy, Executive, Environmental Services and Safety	NV Energy
3.Employer	Debra Gallo, Director, Govt & State Regulatory Affairs	Southwest Gas
4.Employer	David Peri, Owner	Peri & Sons
5.Employer	Stephanie Calmy, Sr. Human Resources Analyst	Las Vegas Valley Water District/SNWA
6.University	Jim Thomas	DRI
7.Organized Labor	TBD	UA Local 525/Southern Nevada

TOURISM, GAMING AND ENTERTAINMENT		
Required Categories	Name of Council Member	Company Name
1.Employer	Donna Lauger, VP Operational Quality & Development	Wyndham
2.Employer	Valerie Murzl, Sr. VP Operational Quality & Development	Station Casinos
3.Employer	Daniel Espino, Sr. VP, Operational Quality & Development	Cosmopolitan
4.Employer	Michele Stevenson, Asst. Director Training	Wynn Resorts
5.Employer	Fe Allen, Director, Talent Acquisition/Corp HR & Training	MGM Resorts, Int'l
6.University	Bobbie Barnes, Director, Bob Boughner Career Services/William Harrah College of Hotel Studies	UNLV
7.Organized Labor	TBD	Culinary Union 226/Southern Nevada

Nevada Labor Market Briefing: March 2016

Department of Employment, Training & Rehabilitation

Don Soderberg, Director

Dennis Perea, Deputy Director

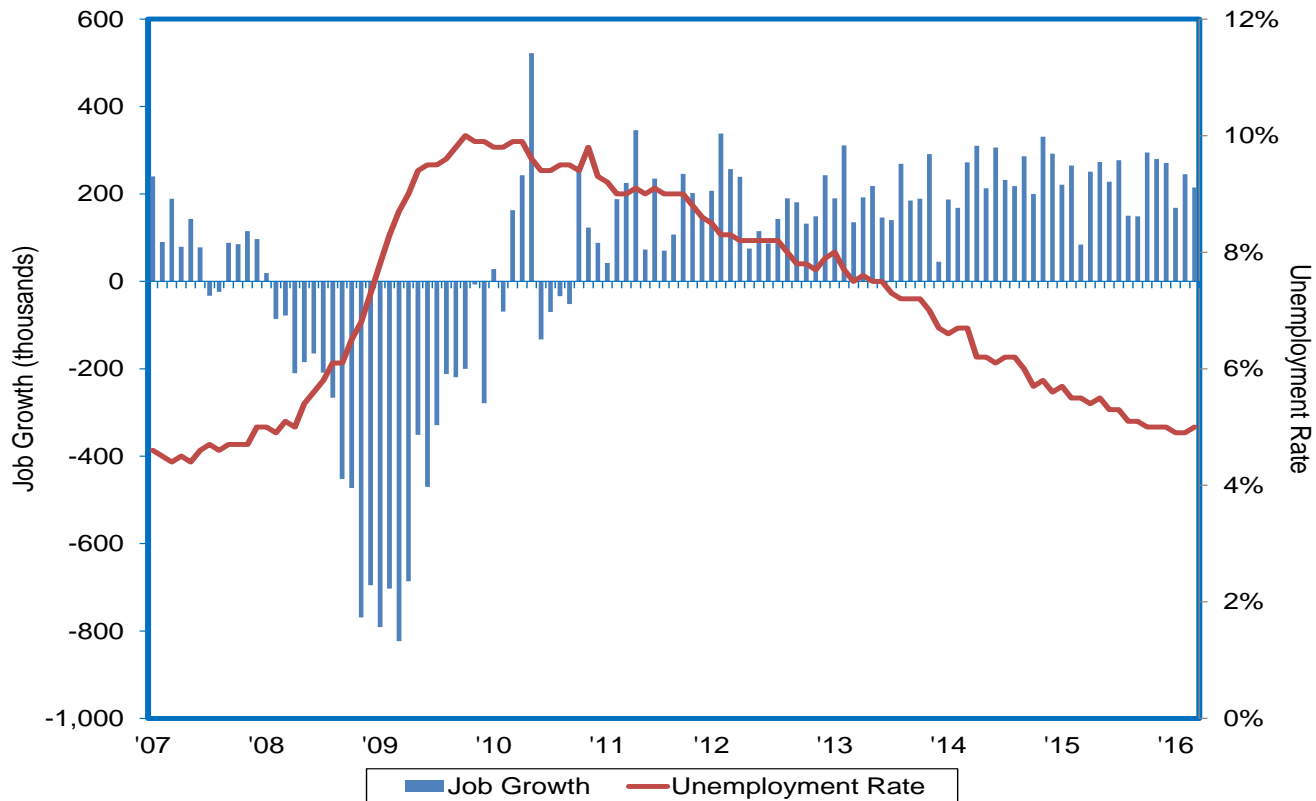
Bill Anderson, Chief Economist

Prepared by the Research and Analysis Bureau



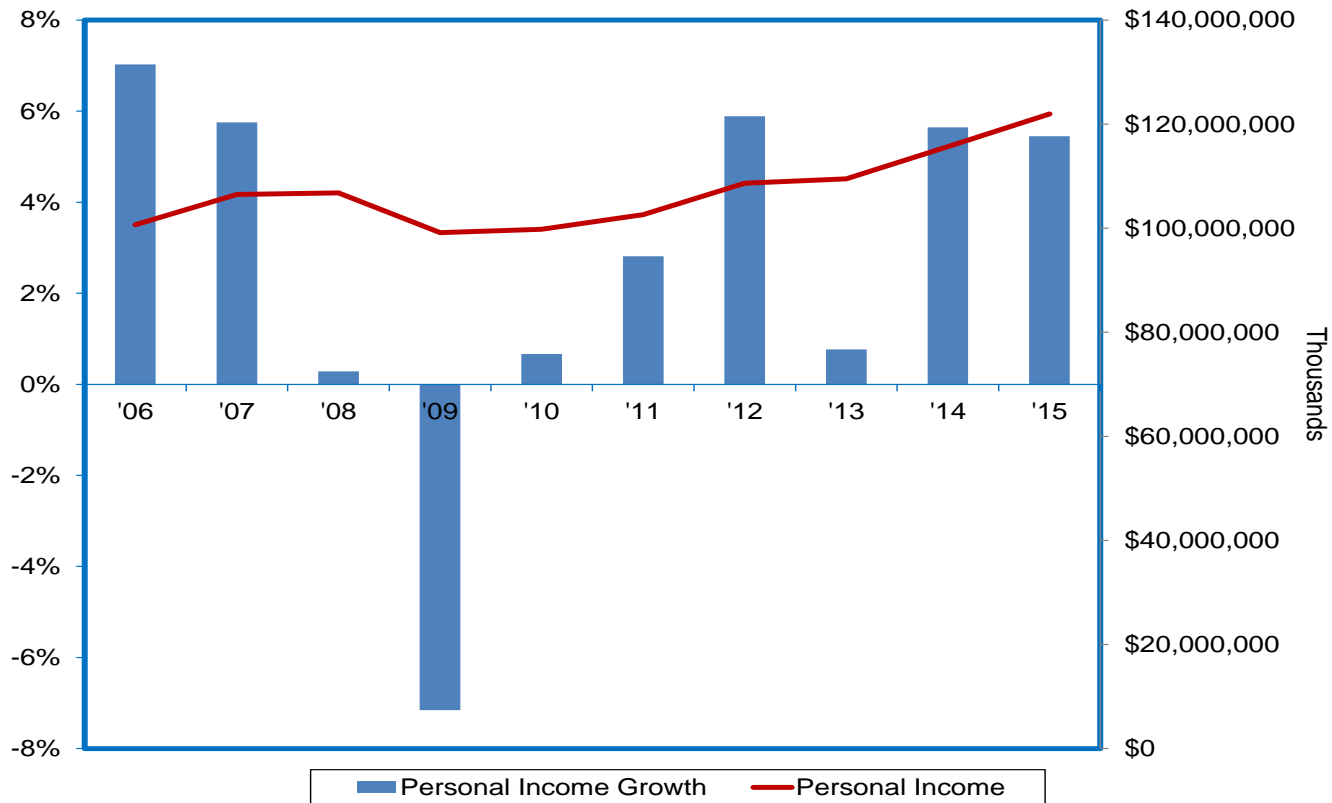
U.S. Jobs on Rise Since Late-2010; Jobless Rate Trending Down, Despite Uptick in March

U.S. Job Growth and Unemployment Rate (SA)




2015 Marks Sixth Straight Year of Personal Income Growth in the Silver State

Nevada Personal Income



Most Common Degrees Differ Considerably Across Industries and Counties

Most Common NSHE Degrees by Industry/County (NPWR Research Tool)

Nevada's Most Common NSHE Degrees By Industry and County for 2014		
County	Largest Industry (3 Digit NAICS)	Most Common Degree Awarded
Carson City	Administration of Economic Programs (926)	Civil Engineering BS
Churchill	Educational Services (611)	Associate of General Studies
Clark	Food Services and Drinking Places (722)	Hotel Administration BS
Douglas	Accommodation (721)	Associate of Arts
Elko	Mining (except Oil and Gas) (212)	Electrical Systems Tech AAS
Esmeralda	Educational Services (611)	Special Education MEd
Eureka	Educational Services (611)	Secondary Education BS/Psychology BA
Humboldt	Mining (except Oil and Gas) (212)	Associate of Arts
Lander	Executive, Legislative, and Other General Government Support (921)	Criminal Justice AAS
Lincoln	Educational Services (611)	Secondary Education BS
Lyon	Educational Services (611)	Elementary Education BSED
Mineral	Administrative and Support Services (561)	Associate of General Studies
Nye	Mining (except Oil and Gas) (212)	Electrical Systems Tech AAS
Pershing	Mining (except Oil and Gas) (212)	MBA
Storey	Mining (except Oil and Gas) (212)	Geographic Info Systems AAS/Geography BS
Washoe	Accommodation (721)	Associate of Arts
White Pine	Mining (except Oil and Gas) (212)	Diesel Technology Cert





State Unemployment Rate

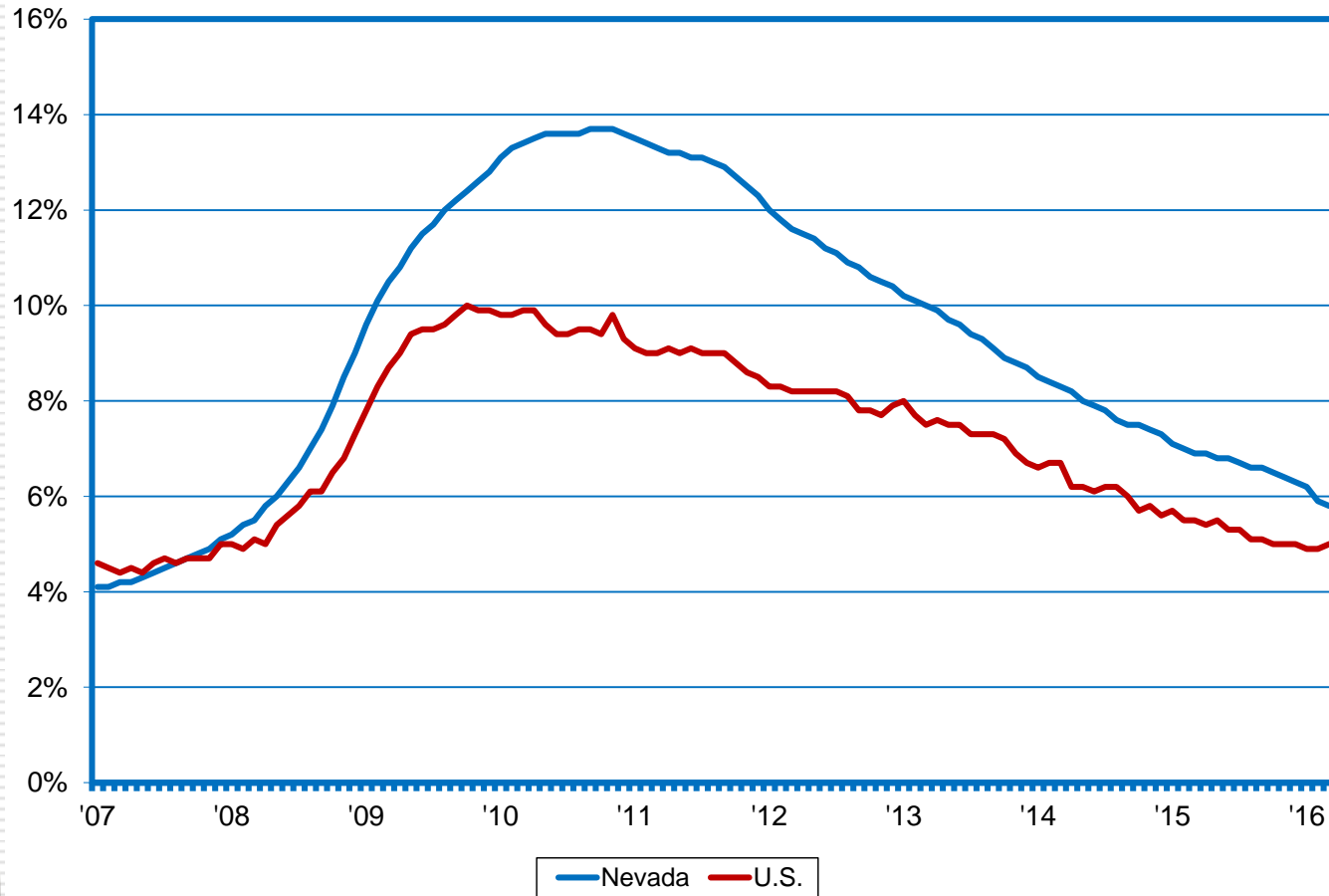
- ❑ 5.8% Unemployment Rate (SA¹)
 - ❑ Down 0.1 point from February; down from 6.9% a year ago
 - ❑ Lowest since March 2008
 - ❑ Off from a recession peak of 13.7%
 - ❑ Unemployment down more than 100K over the recovery; 83K unemployed Nevadans in March
 - ❑ Compares to a 5% rate for the U.S.— 0.8 percentage point higher
 - ❑ Smallest differential since June 2008

¹seasonally adjusted



Nevada Jobless Rate Continues to Decline; U.S. Rate Ticks Up

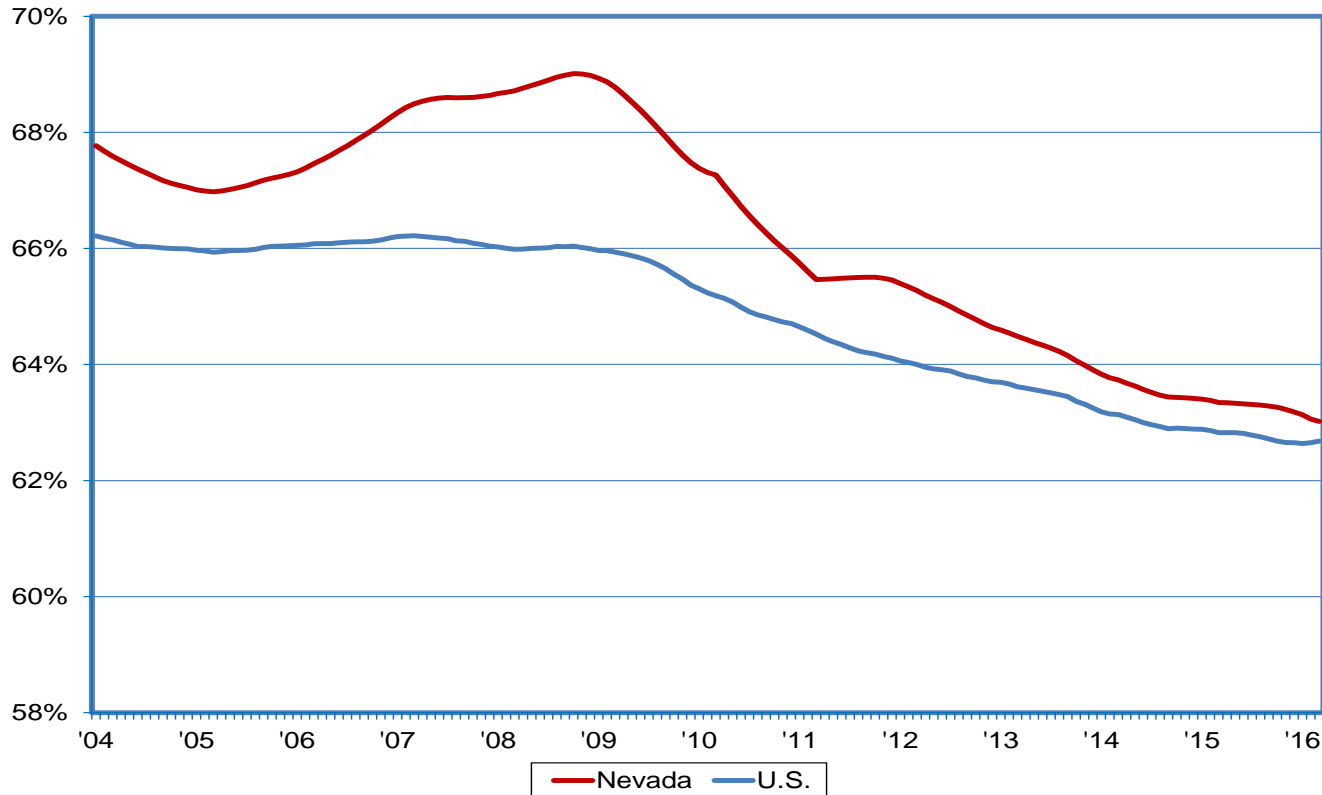
NV vs. the U.S. Unemployment Rate (SA)



The Nevada Department of Employment, Training and Rehabilitation is a proactive workforce & rehabilitation agency

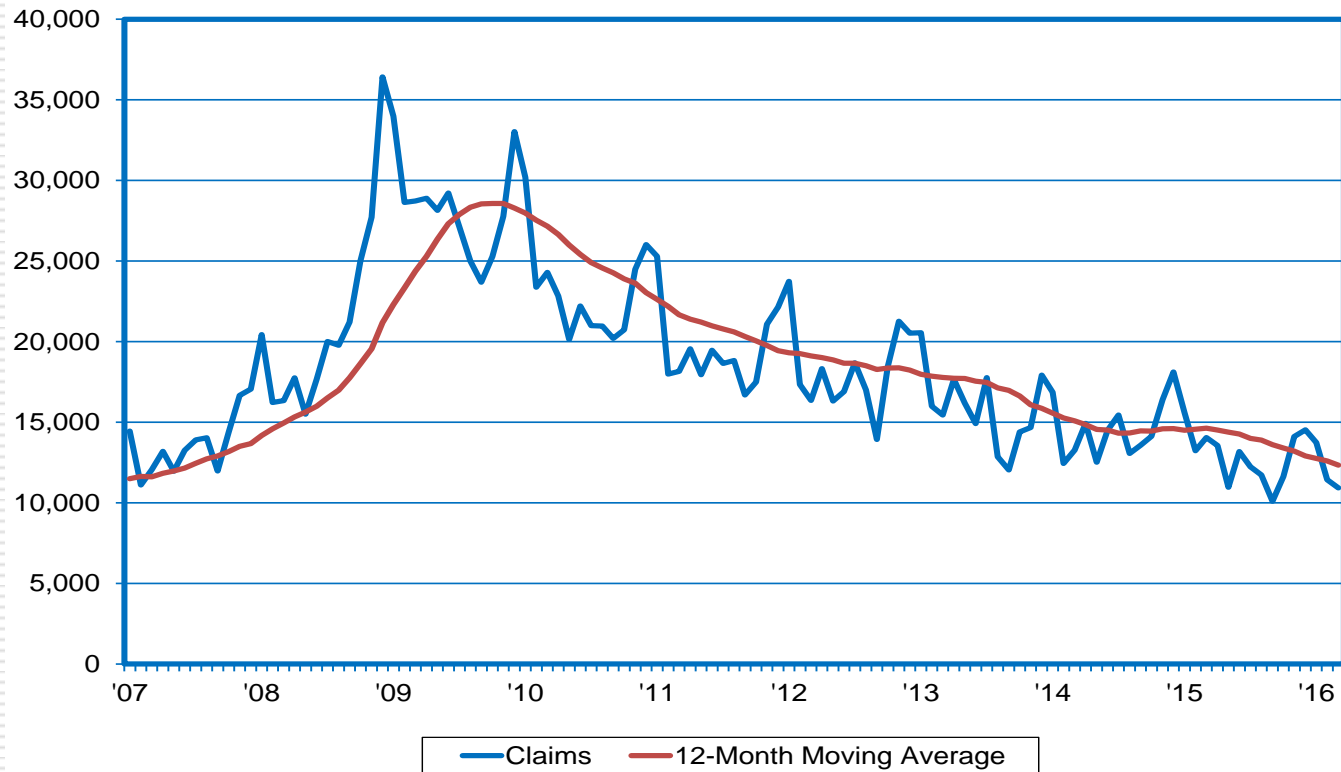
LFPR Trending Higher than U.S.; Declining Over Time Due to Structural/Cyclical Forces

Labor Force Participation Rate (12-month moving average)



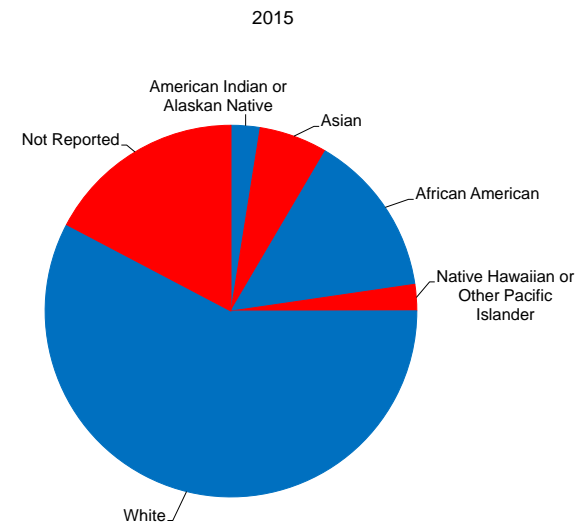
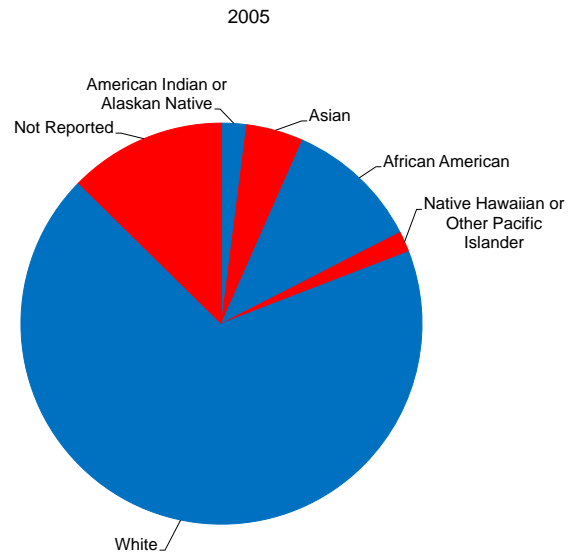
Initial Claims Activity Continues to Decline at a Pronounced Rate

Initial Claims for Unemployment Insurance



The Demographics of UI Claimants has Changed Marginally Over the Past Decade

Racial/Ethnic Characteristics of Unemployment Insurance Claimants





State Employment (SA)

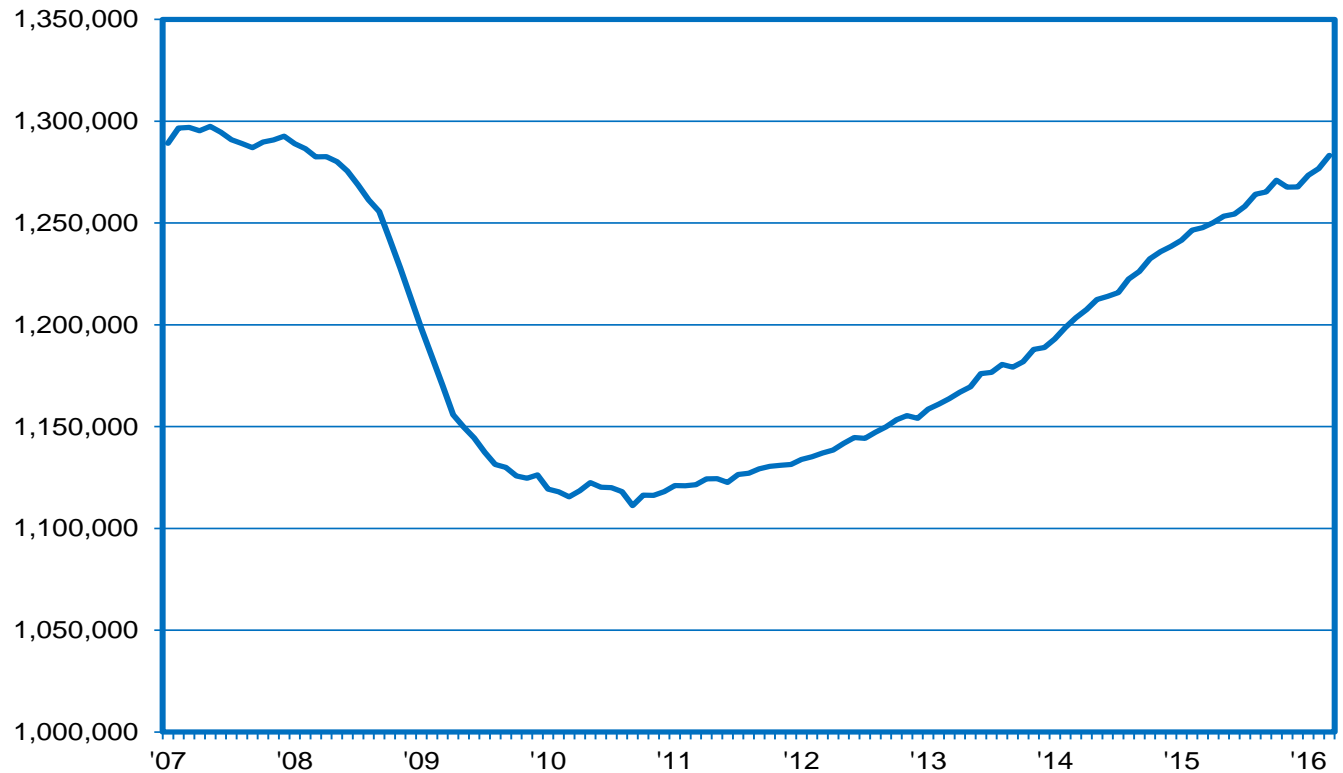
- ❑ Non-Farm Job Levels Up 35,500 Relative to a Year Ago in March
 - ❑ 63 consecutive months of year-over-year gains
 - ❑ 2.8% gain compares to 2% in the nation
- ❑ Up 6,500 Over the Month
 - ❑ 4,400 (NSA²) jobs were expected to be gained based upon historical trends, but 10,900 were actually gained, resulting in the seasonally adjusted gain

²not seasonally adjusted



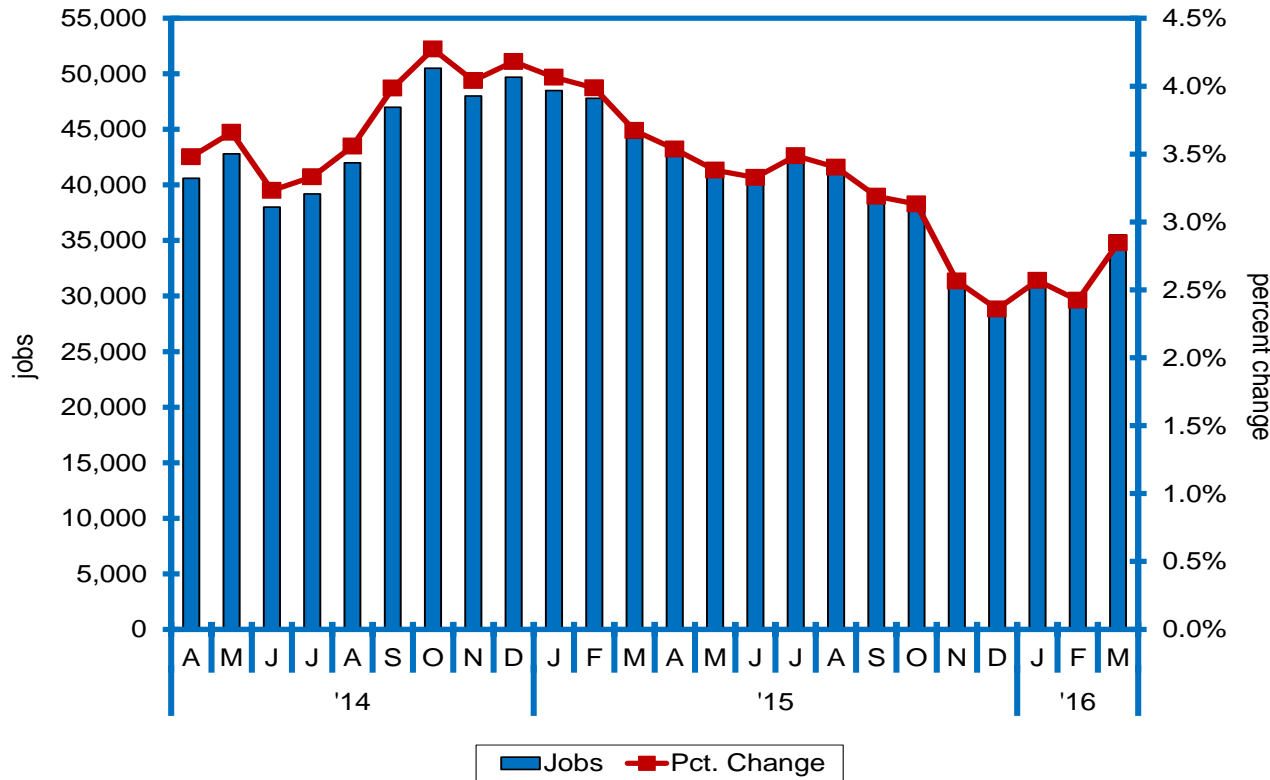
Nevada Job Levels Continue on an Upward Trend; Up Nearly 32K in First Quarter of 2016

Nonfarm Jobs in Nevada (SA)



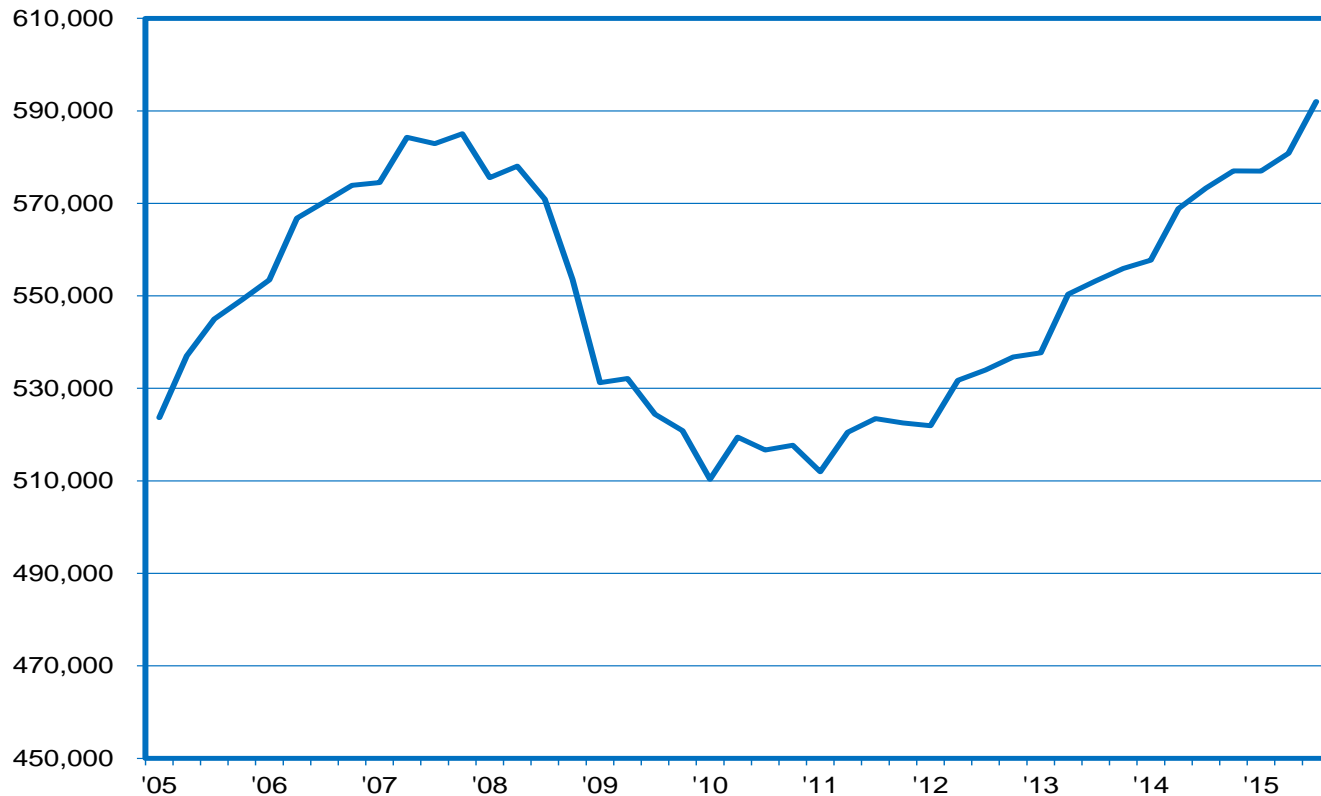
March's 2.8% Job Gain is Strongest Since October 2015

Job Growth (SA; year-over-year)



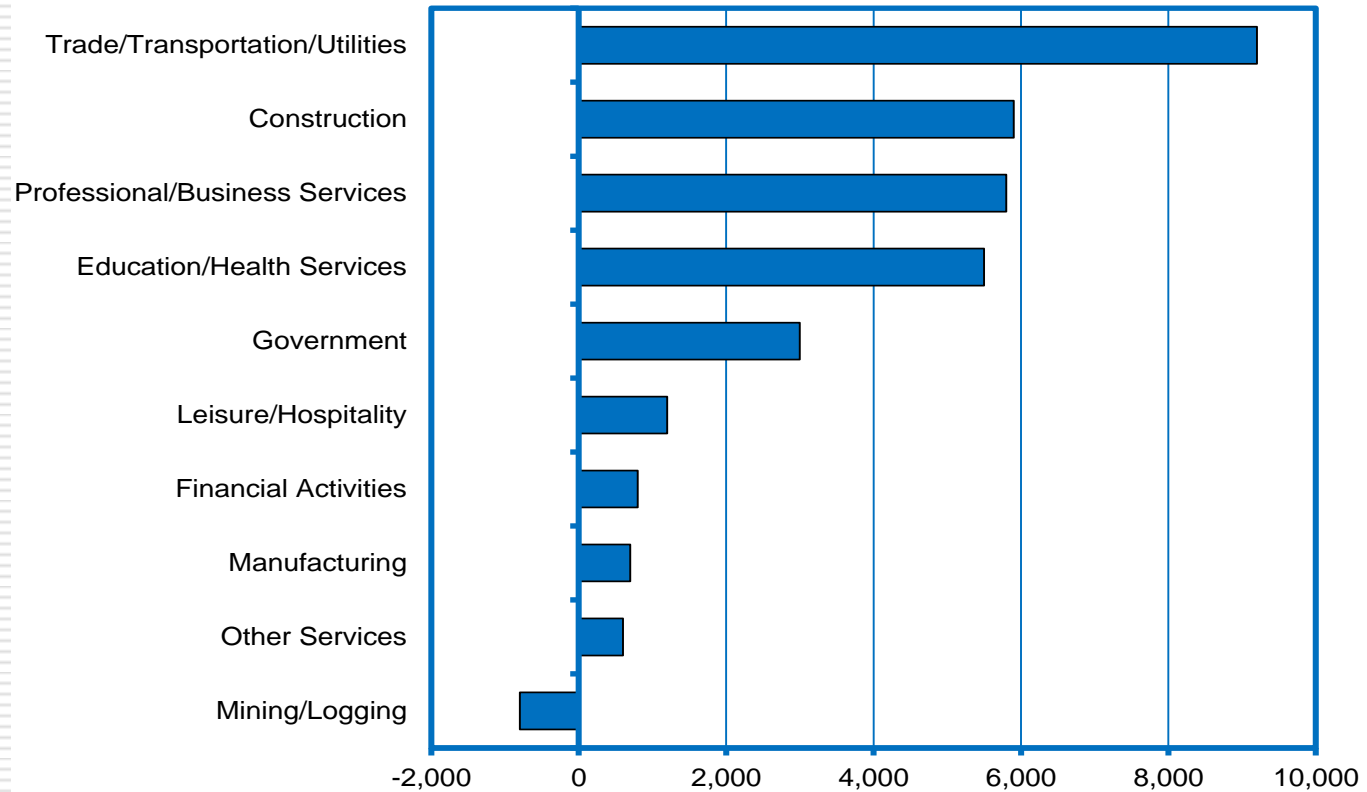
Small Biz Jobs at All-Time High; Gains Recorded in Each of Past 19 Quarters

Employment in Establishments With Less Than 100 Workers



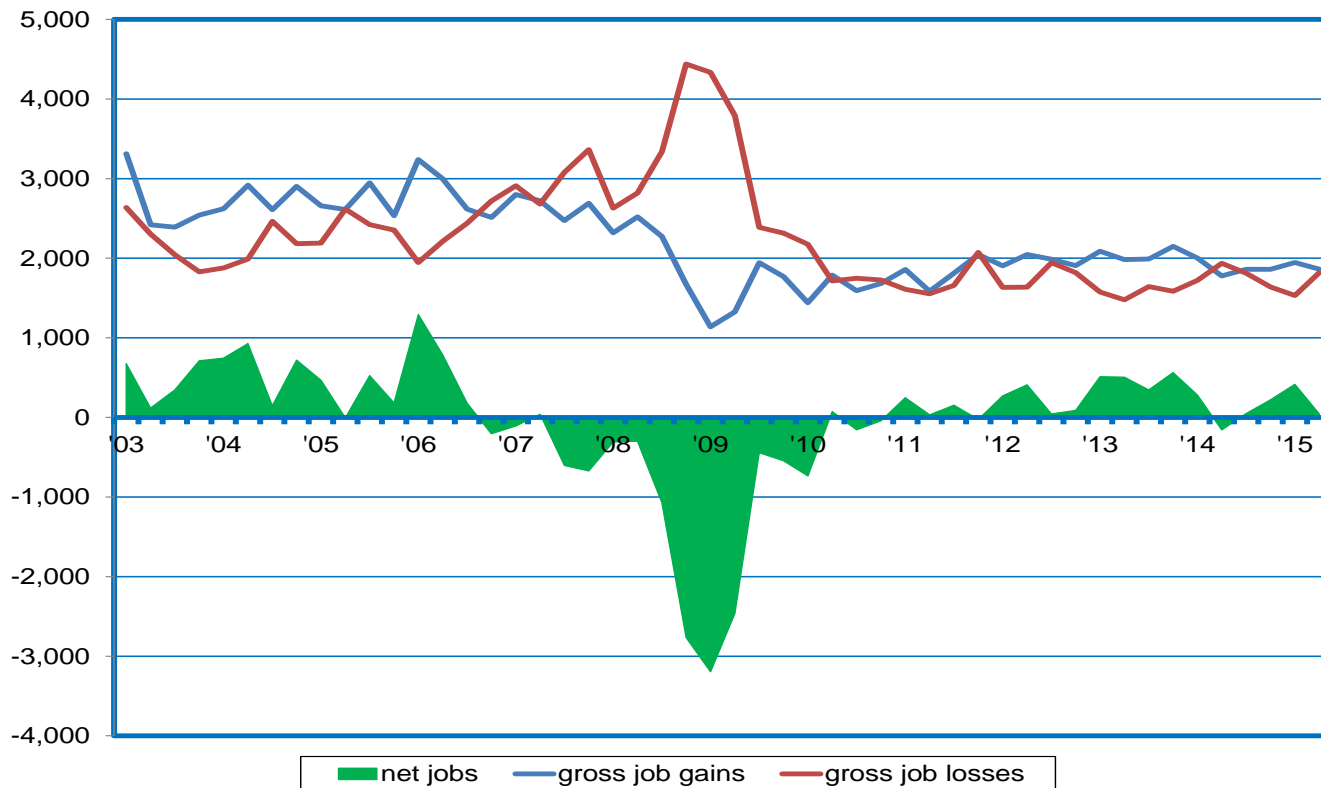
Trade, Construction, PBS, and Healthcare Lead the Way in Job Gains

YTD Job Growth by Sector (year-over-year)



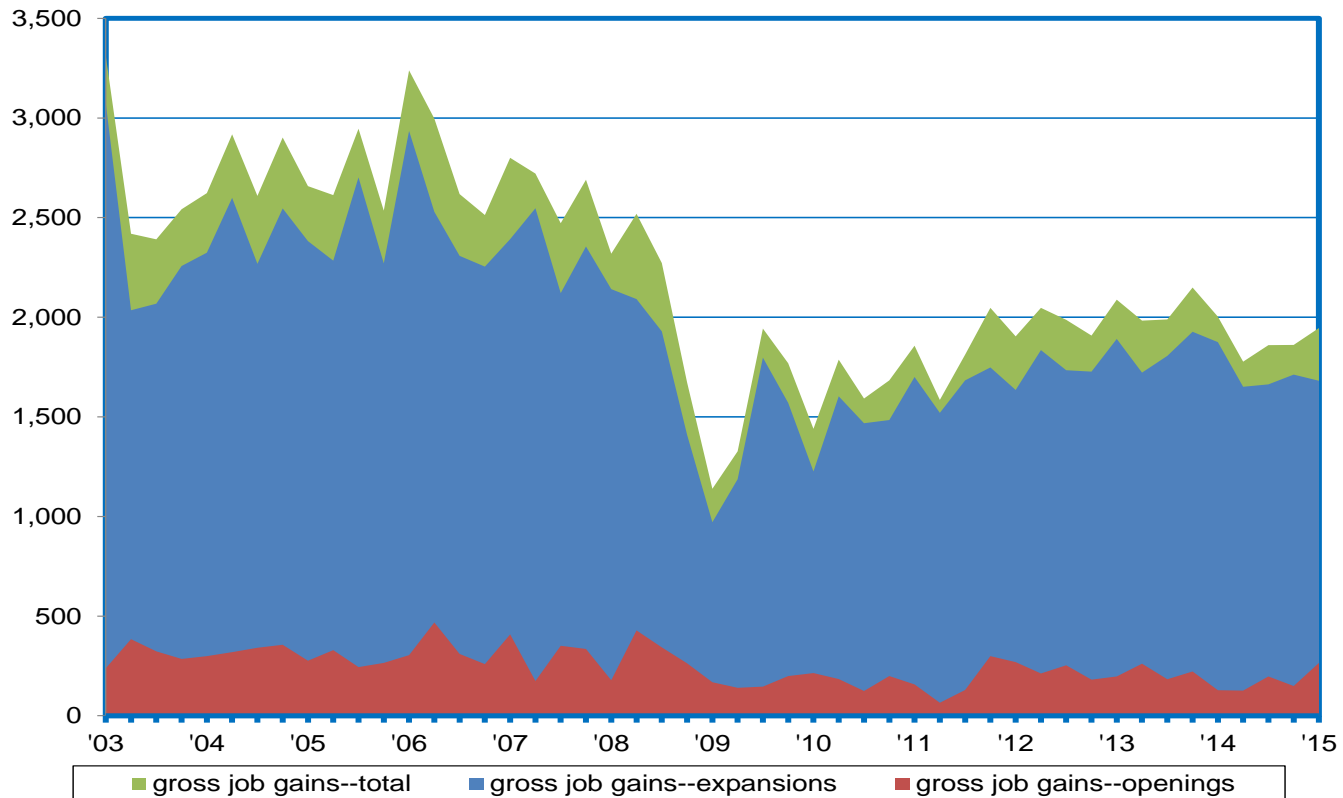
Mfg. Job Gains > Losses in 13 of Past 14 Qtrs.

Manufacturing Gross Job Gains vs. Gross Job Losses; Business Employment Dynamics (Seasonally Adjusted)



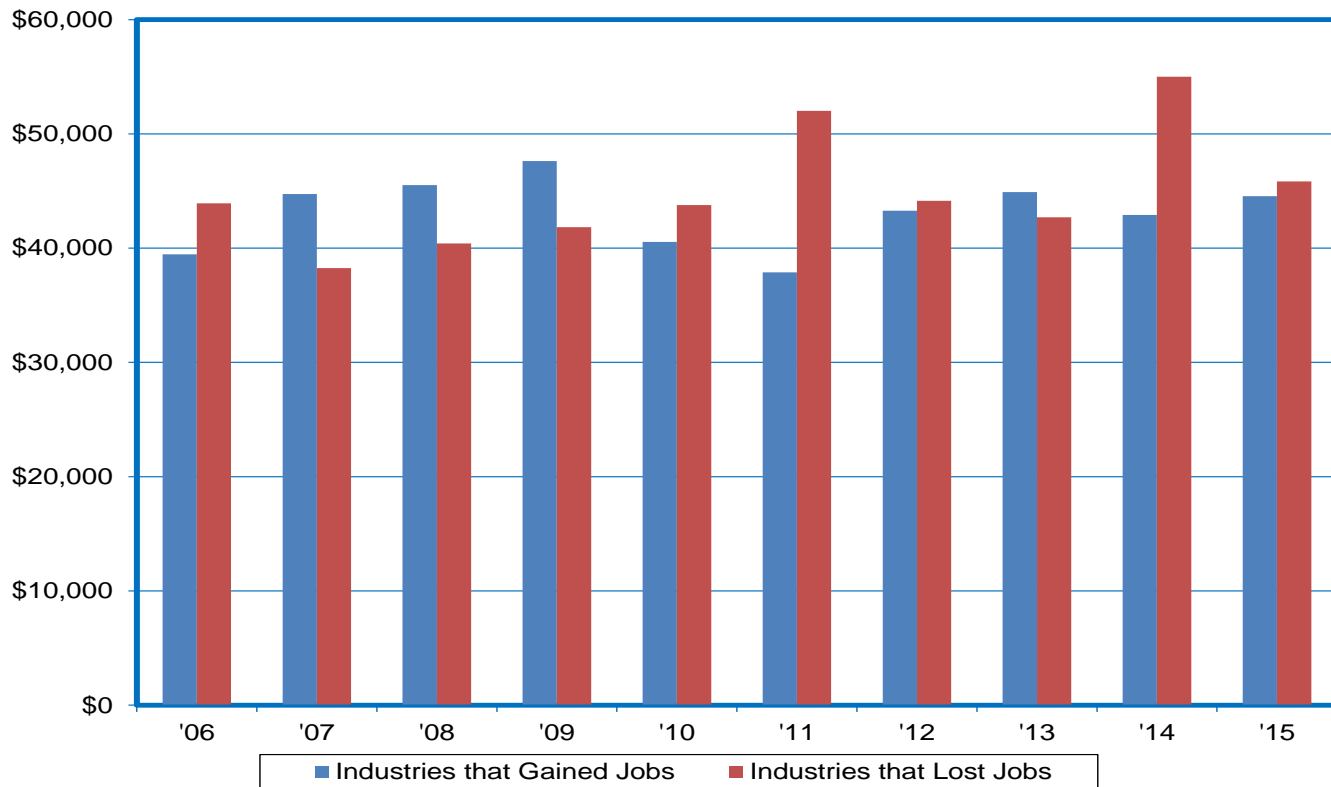
Expansions at Existing Establishments Account for Bulk of Mfg. Job Gains

Manufacturing Job Gains by Source; Bus. Employment Dynamics (Seas. Adj.)



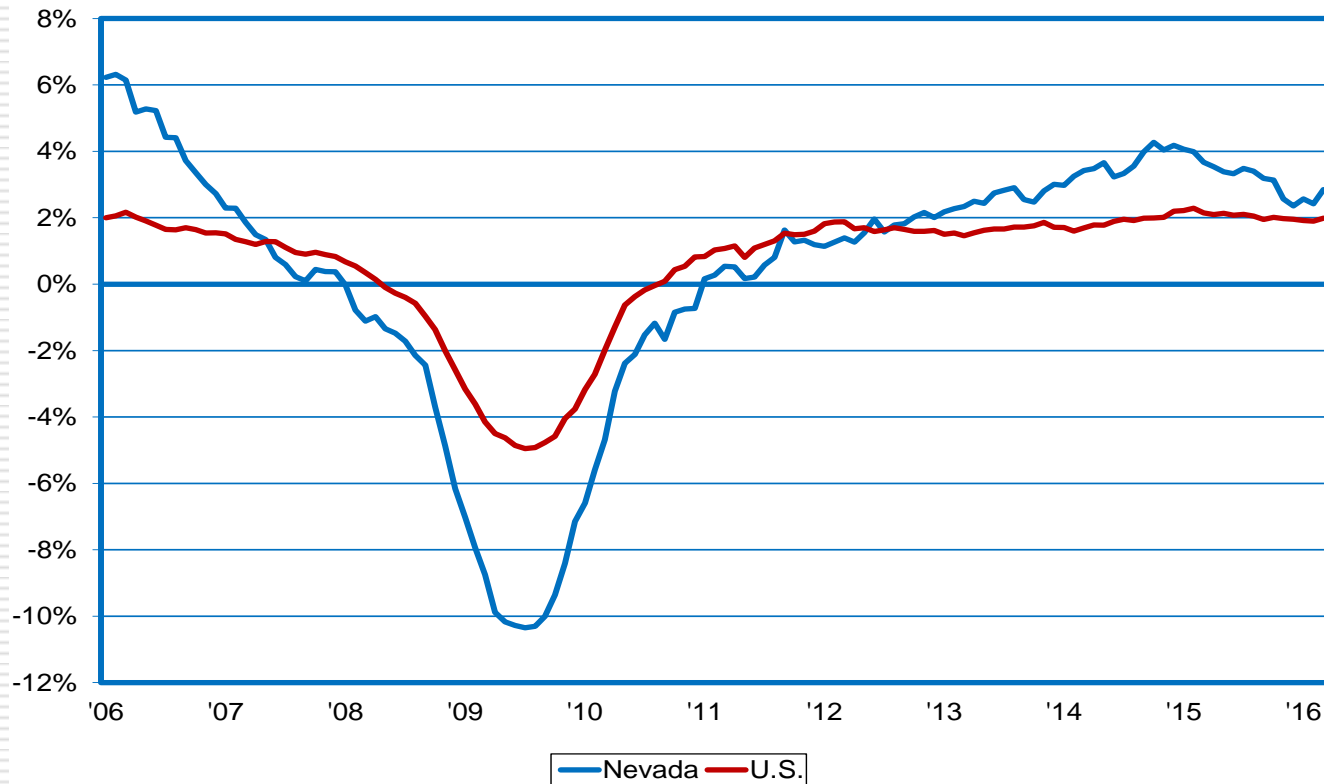
Evidence Suggests a Marginal Tradeoff in Wages in Growing/Declining Industries

Annual Earnings in Industries Adding Jobs vs. Those Losing Jobs



Nevada Job Growth Exceeds Nation in 44 Straight Months

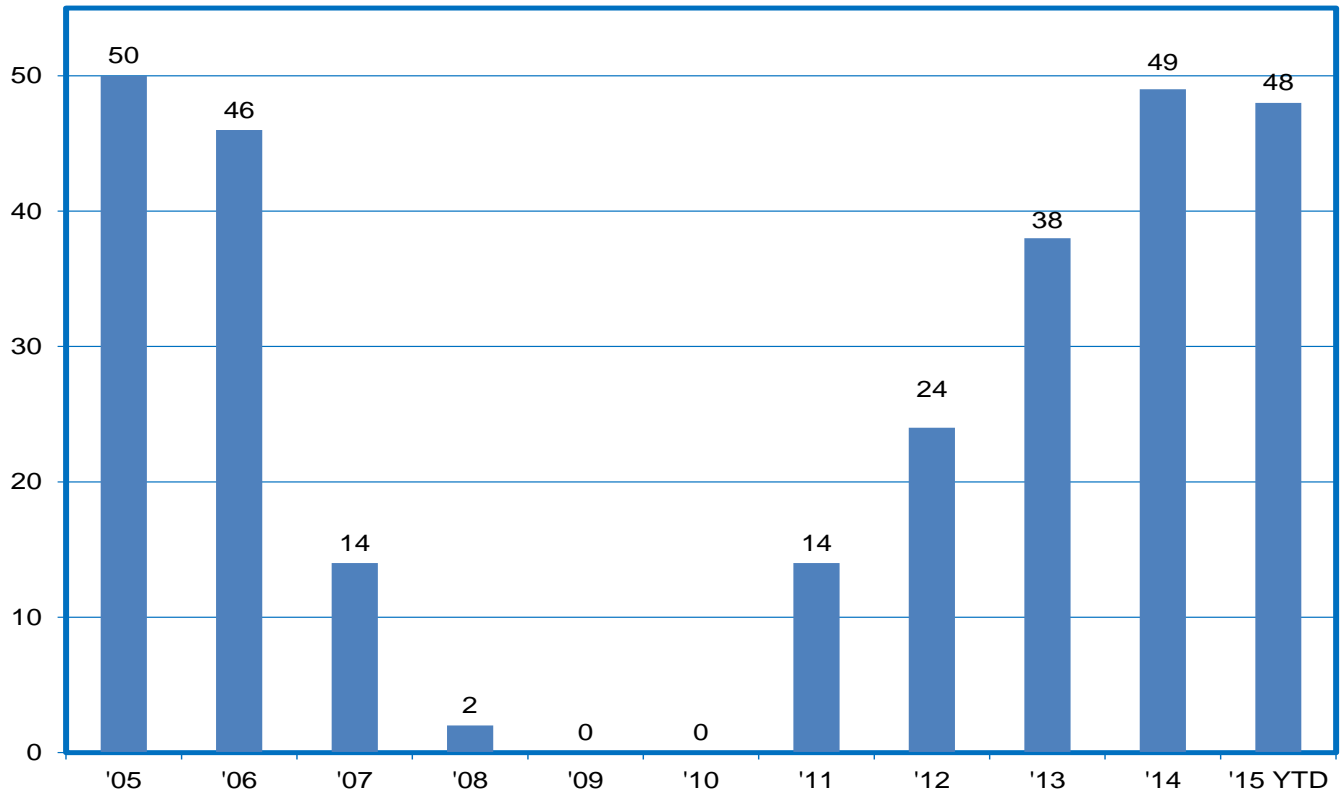
Job Growth (year-over-year)



The Nevada Department of Employment, Training and Rehabilitation is a proactive workforce & rehabilitation agency

Silver State Job Growth #3 in the Nation

Job Growth Rankings (# of states with slower private sector job growth than NV; 2015 YTD through IIIQ)



For Additional Information, Please Contact:

Nevada Department of Employment, Training and Rehabilitation
Research and Analysis Bureau

Bill Anderson
Chief Economist
wdanderson@nvdetr.org

Christopher Robison
Supervising Economist
c-robison@nvdetr.org

(775) 684-0450

<http://www.nevadaworkforce.com>

follow us on Twitter @nvlabormarket

